



2024

GLOBAL

WR1 Enterprise Product Deep Dive

www.isb-global.com



GLOBAL



WR1 PRODUCT DEEP DIVE





Waste & Recycling 1.

The worlds most advanced environmental, waste management and recycling software, suitable for small, midsize and large enterprises.

- Waste & Recycling One (WR1) is a software solution that standardises, integrates, simplifies, and automates all your waste and recycling processes, to create efficiencies throughout the business.
- The software has been engineered in cooperation with the waste and recycling industry since 2005. Operational business processes and workflows have been carefully designed to meet the industries requirements.
- From waste collection to recycling and selling materials, WR1 delivers instant control and complete visibility across your entire waste management and recycling operations.



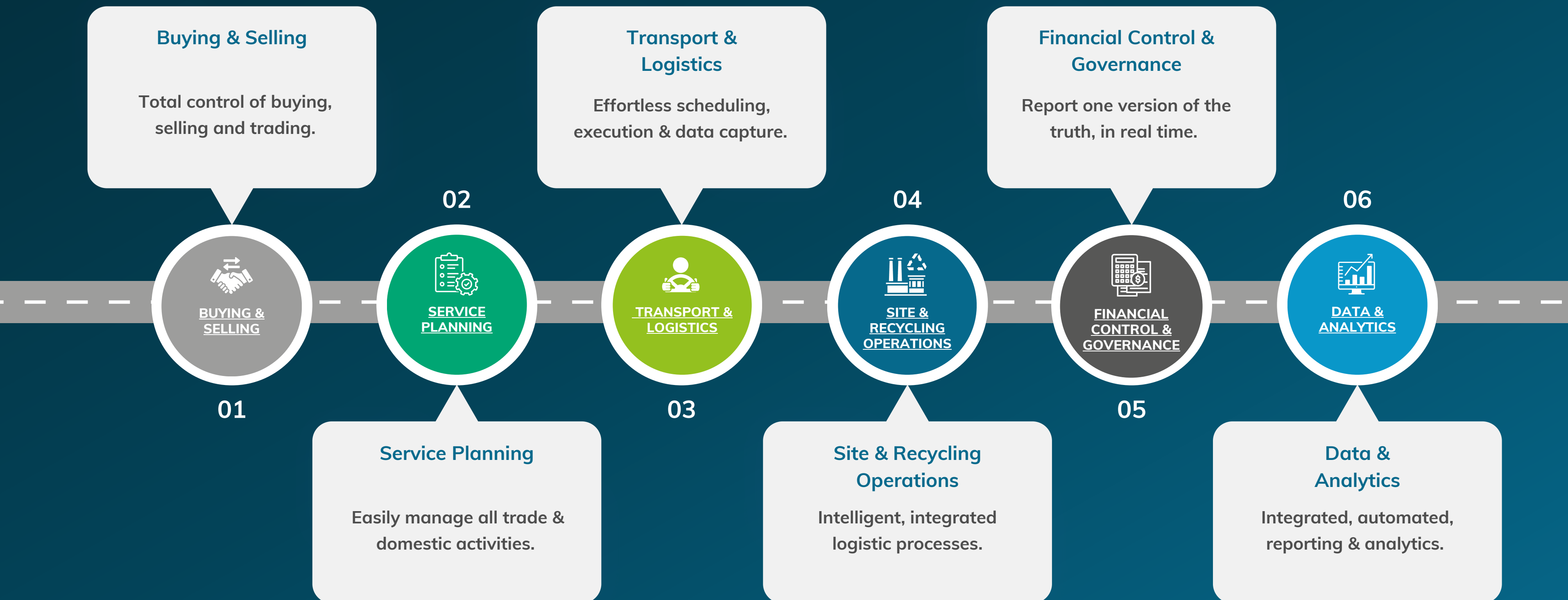
WR1 Process Flow.

WR1 delivers instant control & complete visibility across operations for businesses operating in waste, recycling & environmental sectors.





WR1 FUNCTIONAL GROUPS





Buying & Selling.

From acquisition to contract VR1 has extensive mobile and web enabled commercial functionality that allows for the flexibility yet total control of buying, selling and trading both services and materials.



- 01** Bring together all buying & selling activities including; CRM, enquiries & quoting.
- 02** Efficient and effective management customer & supplier acquisition.
- 03** Seamless operational processes right through to finance & billing.



BUYING &
SELLING



Service Planning.

Taking the contract through to order, WR1 enables easy service planning to manage the numerous combinations of trade and domestic activities, ensuring everything is automatically updated and processed.



- 01 Contracts, pricing & service areas held & managed with strict controls & workflows.
- 02 Always know what services are available, across all locations, at any time.
- 03 Planning services and collections becomes easier and accurate.



SERVICE
PLANNING





Transport & Logistics.

Drive the order to fulfillment, with effortless transport scheduling with intelligent logic to deliver straightforward collection execution and automated data capture.



TRANSPORT &
LOGISTICS

- 01 Efficiencies in planning, scheduling, route optimisation & driver management.
- 02 See what needs to be done & when and make changes instantly, even from the road.
- 03 Third party vehicles can be managed in the exact same way.



Site & Recycling.

Progress from fulfillment to stock with full control and accurate reporting, you'll see profits rise as plant and recycling operations become smoother and more efficient.



SITE &
RECYCLING
OPERATIONS

- 01 Integrated Weighbridge, materials management, plant control & reporting.
- 02 Alignment with stock & billing drives greater profitability as operations gain efficiency.
- 03 Ensuring more of your material is quickly and accurately brought & sold.



Financial Governance.

Seamless processes from order to cash as WR1 delivers one version of the truth, instant control and complete visibility across your entire waste management and recycling operations.



- 01** Achieve clarity and profitability as WR1 reports 'One Version of the Truth'.
- 02** Instant control & visibility across your entire waste & recycling operations.
- 03** Plan, track, capture, analyse, & accurately report on all aspects of the business.



FINANCIAL
CONTROL &
GOVERNANCE





Data & Analytics.

Control everything from operations to finance with integrated data & analytics. With VR1, you can trust that you have the right data at the right time to optimise your operations.



- 01** Data unlocks automation, resource efficiency, compliance, & profitability.
- 02** Experience an integrated 360 view of operations and finance.
- 03** Full visibility to make informed decisions based on real-time insights.



DATA &
ANALYTICS





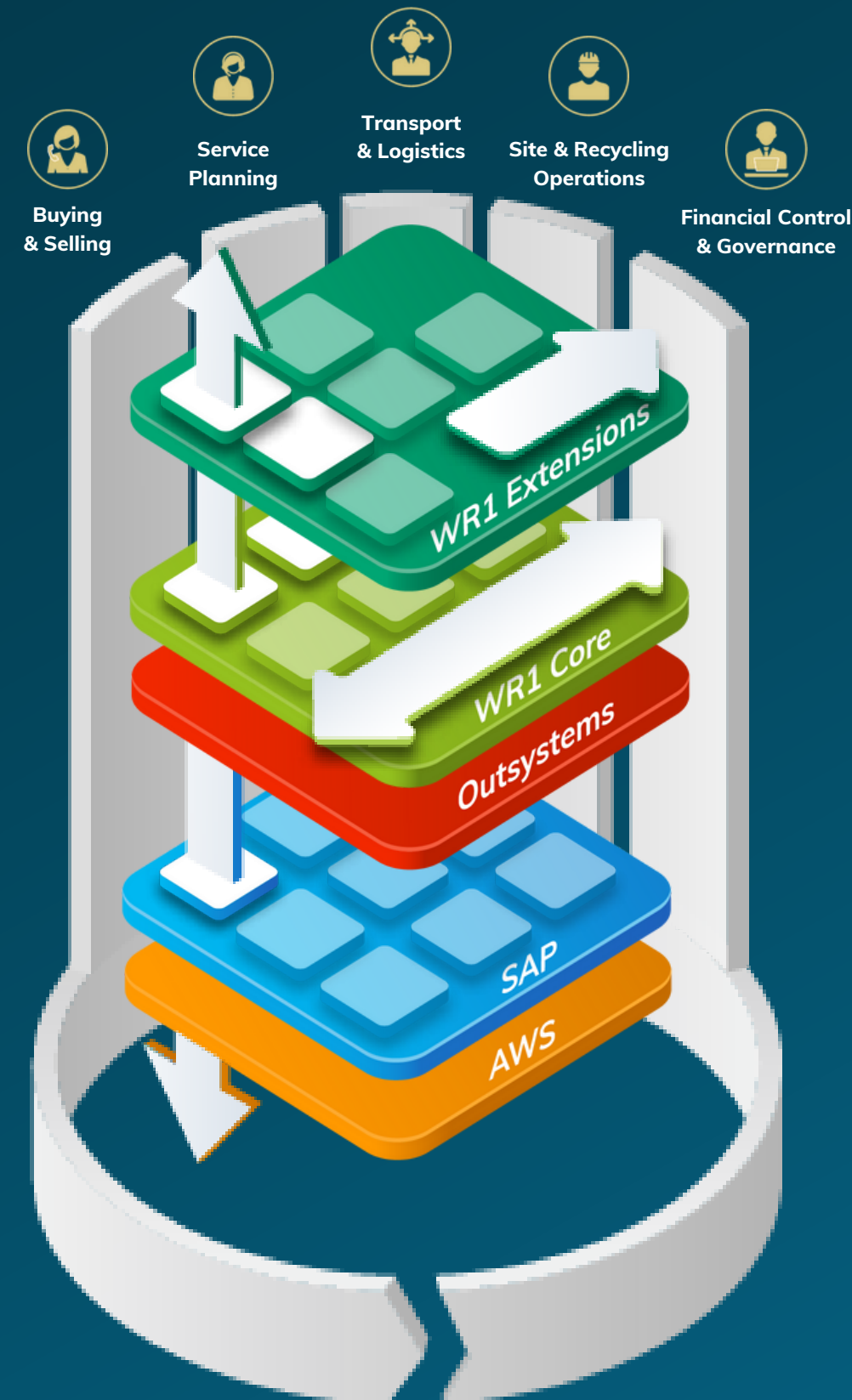
WR1 TECHNOLOGY STACK



Technology Stack.

WR1 is deployed on a world leading technology stack, built on OutSystems low code Platform, fully integrated to SAP.

- Integrated business process in a single solution, using the same data for accuracy, compliance and reporting.
- Automated tasks, activities, processes and master data control over integrated native mobile and web apps.
- Instant control and complete visibility across your entire waste management and recycling operations.

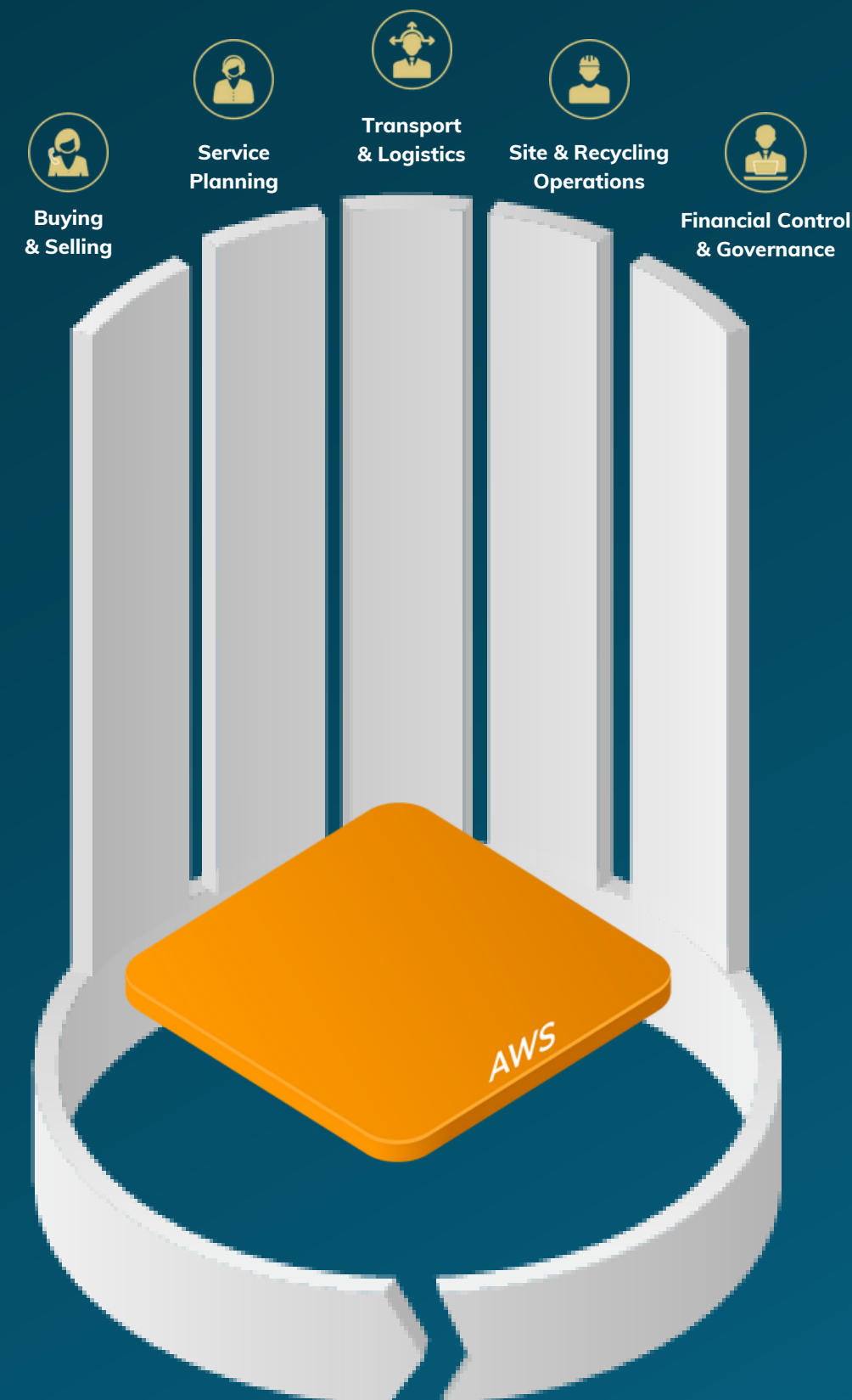


- OutSystems Low code development platform, enables new and innovative applications at speed.
- SAP for all back office finance and accounting. Delivering control, governance, compliance and analytics.
- Amazon Web Services (AWS) provides world leading cloud computing and storage services for WR1.



Innovative, agile & fast.

ISB Global is a proud Amazon Web Services partner and WR1 is hosted & integrated to Amazon Web Services (AWS) infrastructure & storage (IAAS).

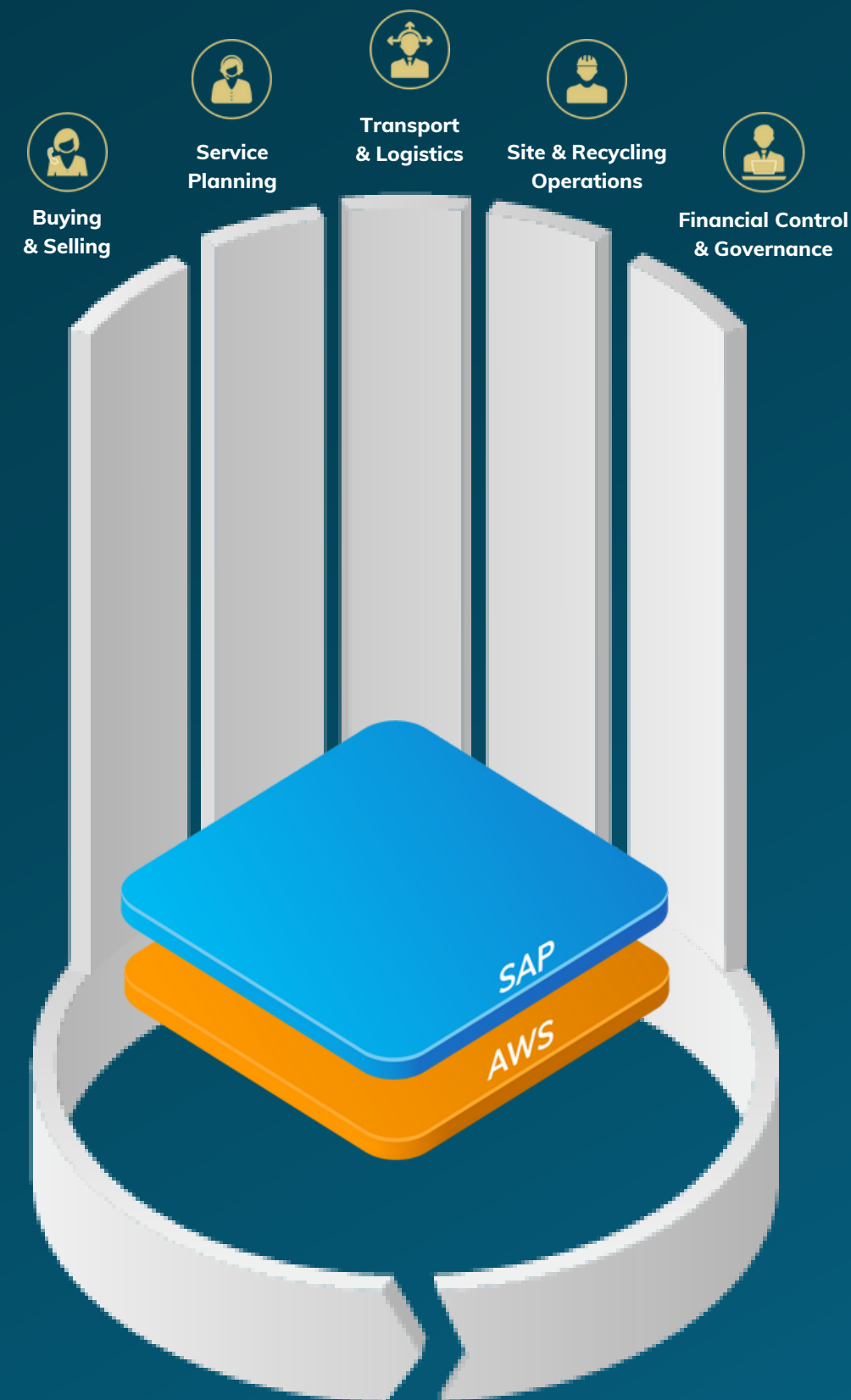


- 01** AWS can provide cloud services for Waste & Recycling One, offering industry leading computing, storage, security, flexibility and scalability.
- 02** As the world's most comprehensive and broadly adopted cloud platform, AWS offers over 200 fully-featured services from data centres globally.



Leading the way.

As a certified SAP partner, ISB has built WR1 integrated to SAP, the world's leading ERP and business software vendor.

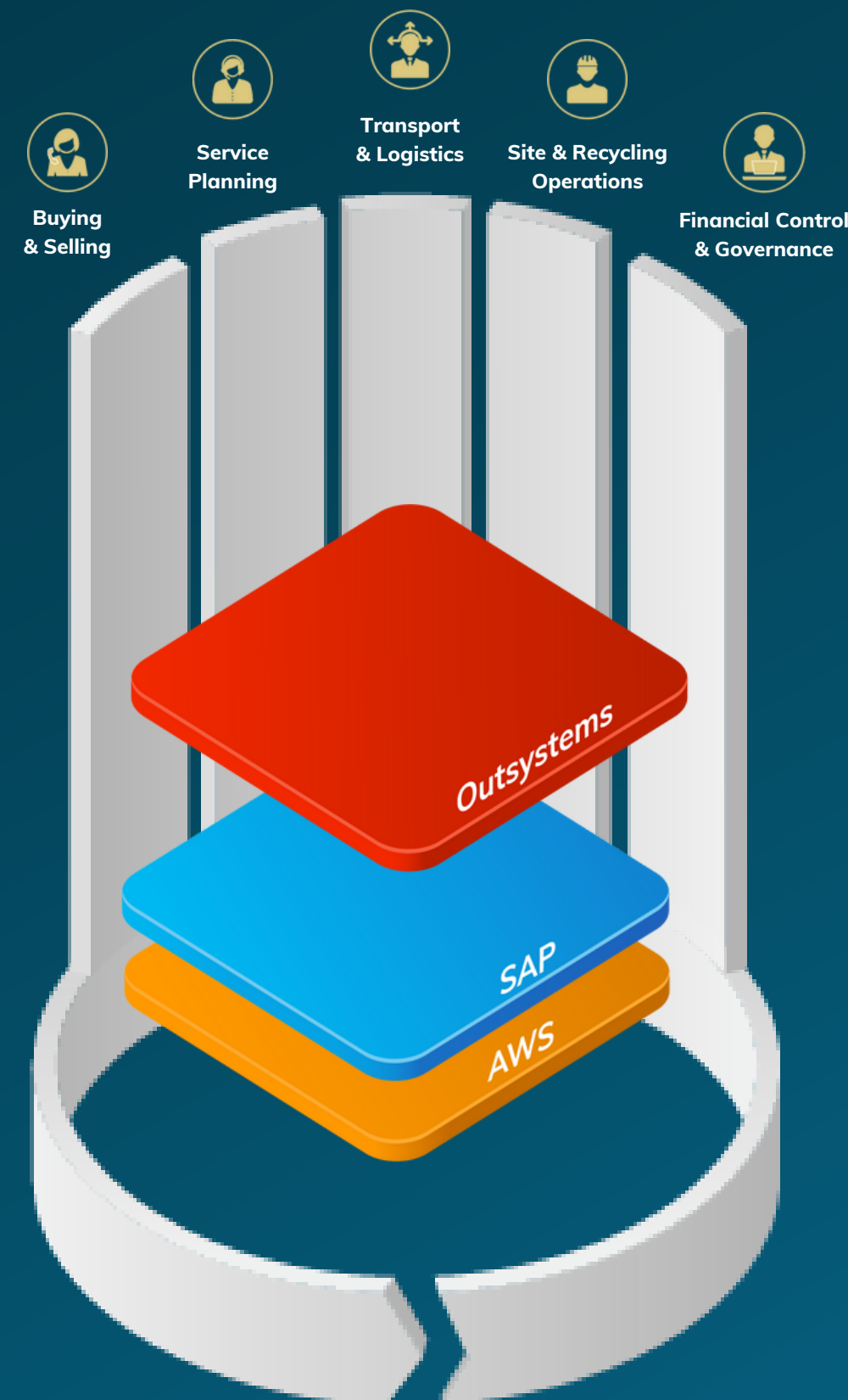
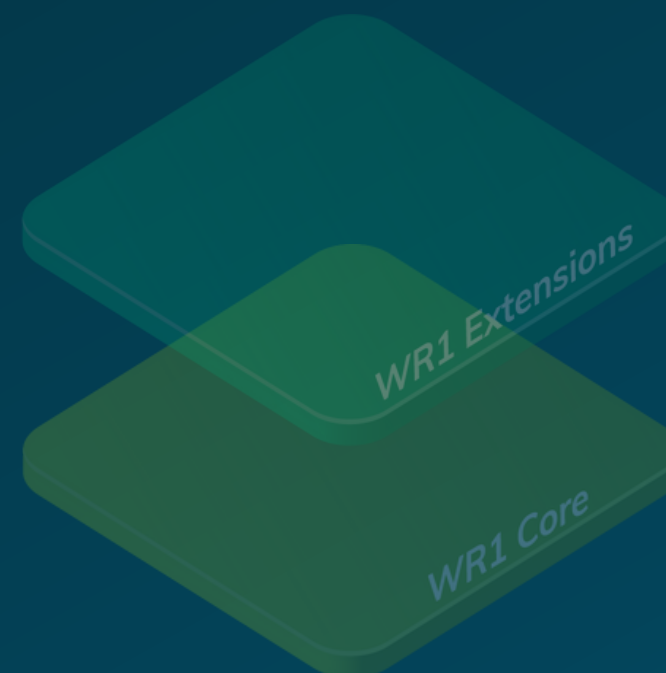


- 01** SAP is one of the world's leading producers of software for the management of business processes.
- 02** SAP provide solutions that facilitate effective data processing and information flow across the organization.



Future-proofed.

Waste & Recycling One has been engineered and deployed on the OutSystems' low code development platform (apaas).



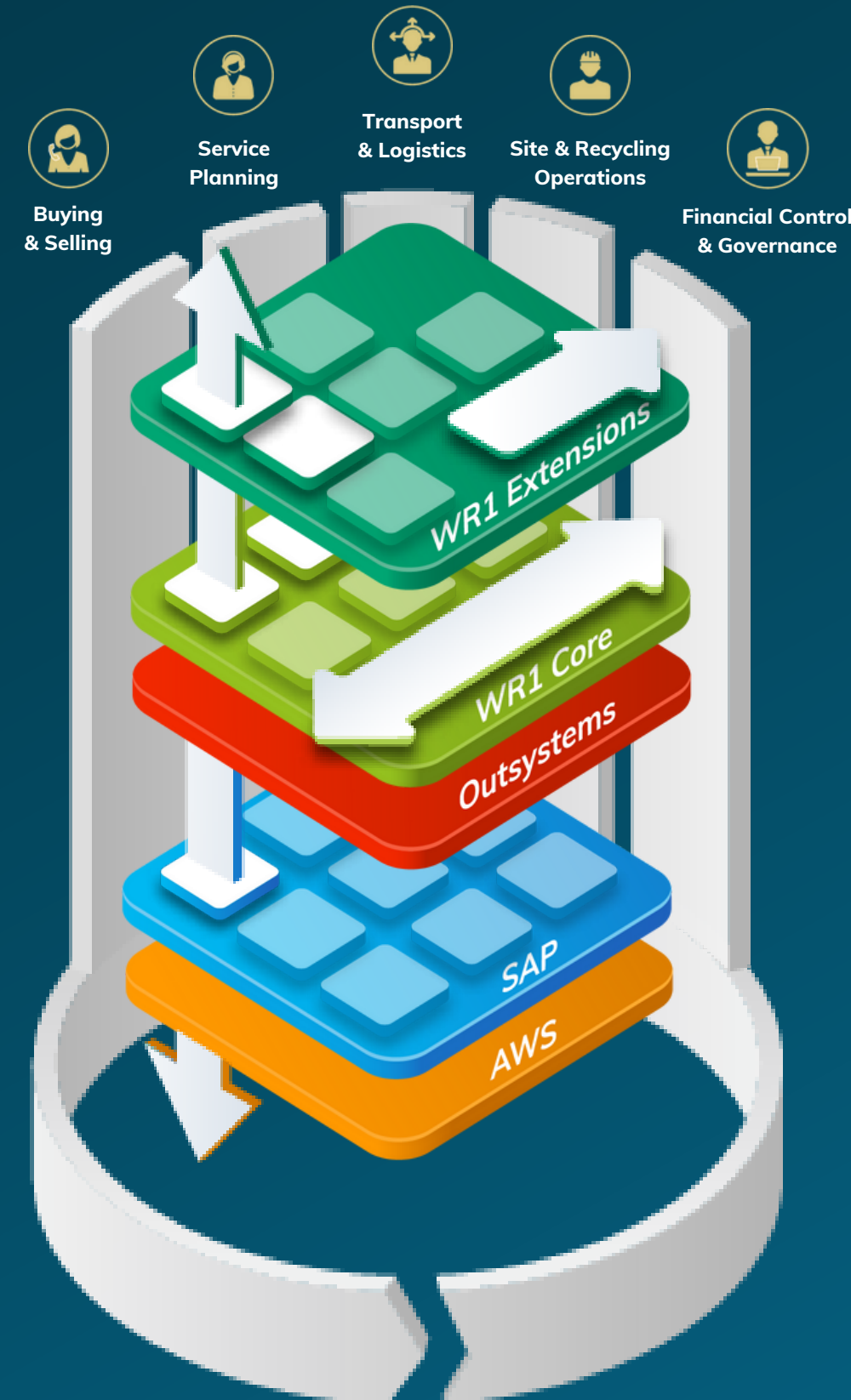
- 01** OutSystems' low-code platform powers the ability to create new and innovative applications, fast, agile and ready for change.
- 02** With OutSystems, WR1 unlocks Internet of Things (IoT) connectivity, functionality and benefits.



A Complete Solution.

WR1 has been engineered in cooperation with the waste and recycling industry since 2005.

- 01** Modules govern and control data and key processes for all waste transport and materials recycling operations
- 02** Providing specific functionality for transport and materials operations.



- 03** Operational business processes and workflows have been carefully designed to meet the industries requirements.
- 04** WR1 is native cloud, developed to be deployed on mobile and web.



WR1 CORE BENEFITS



WR1 Core Benefits.

Waste & Recycling One is built to encompass all industry functions, to ensure complete coverage.

True Integration

An end to interfacing. Many waste management and recycling companies use multiple applications with multiple data sources that don't talk to each other. This brings challenges such as problems and delays in managing and understanding what's really going on across your business. Waste and recycling one solves this problem by providing essential and comprehensive integration.

Compliant Reporting

WR1 ensures your waste and recycling management processes are legal, compliant and easy to report on. Waste and recycling companies need to report on so many different areas to internal and governmental bodies. We've designed waste and recycling one so that you can quickly generate the reports needed, maintaining accuracy to ensure confidence and provide clear compliance reporting.

Accurate Data

WR1 has been designed to handle the complexity of the sector, providing business intelligence you trust. Whole business reporting and reliable Business Intelligence (BI) empowers your organization with accurate, real-time data to help inform their decisions and aid operational and business planning. Using world-leading SAP technology and the advanced analytical tools, you can now have BI that you completely trust.

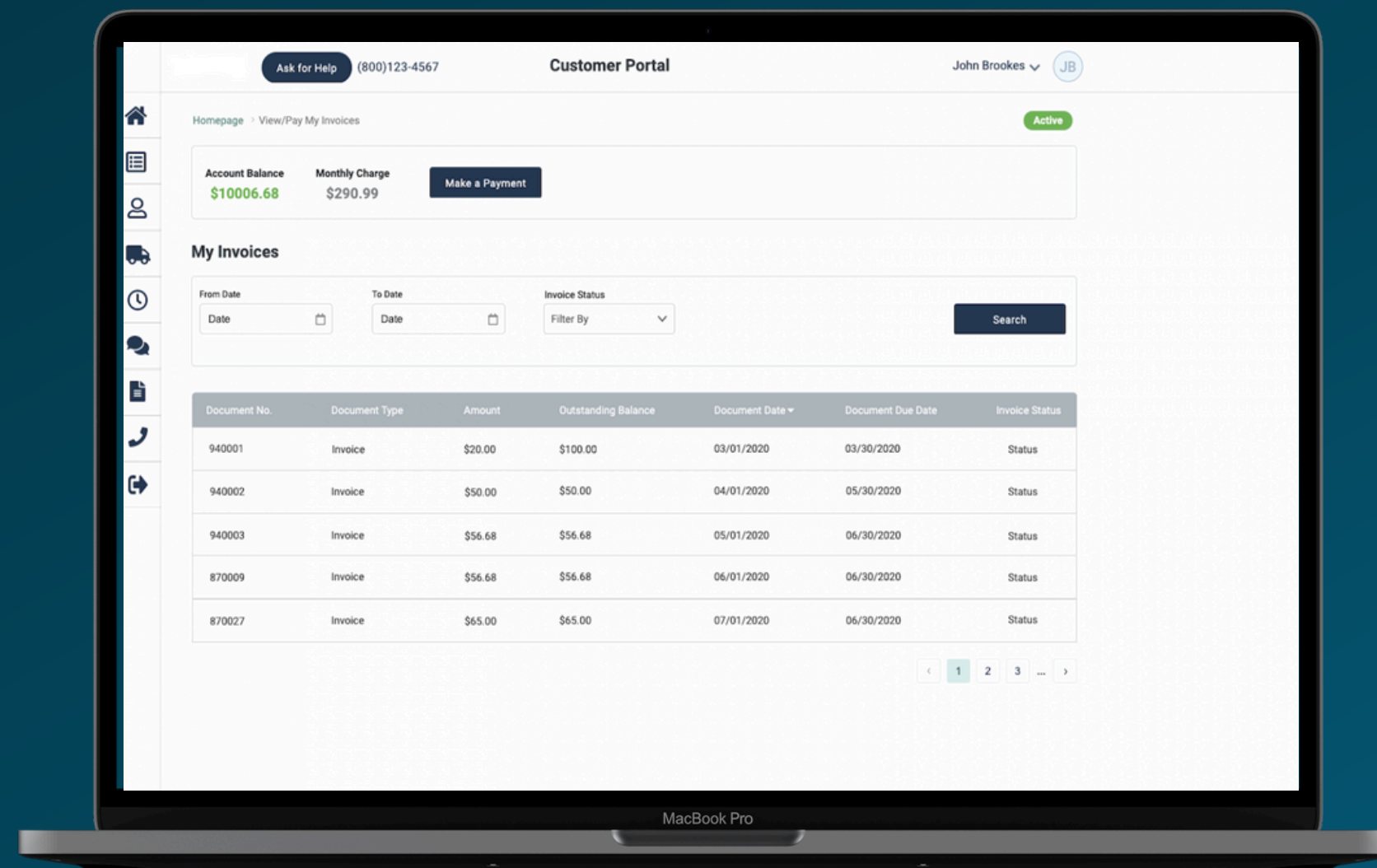
Operational Efficiency

The integrated nature of WR1 delivers huge increases in business and operational efficiency. As a measure of how profitable your company is, your Operational Efficiency is crucial to strong business performance. With our extensive experience in waste management and recycling, our software solution has been designed to drive improvements across the organisation, leading to better Operational Efficiency.



True Integration.

WR1 provides an integrated system and a fully connected organization, leading to greater operational and business efficiencies.



- 01 System overload: Multiple systems hinder waste management efficiency.
- 02 Data chaos: Disconnected data creates operational challenges.
- 03 Unified solution: Waste and Recycling One integrates for clarity.



Accurate Data.

WR1 has been designed to handle the complexity of the sector, providing business intelligence you trust.

[Home](#) [Benefits](#)

The screenshot displays the WR1 web application interface on a tablet. The interface is divided into several sections:

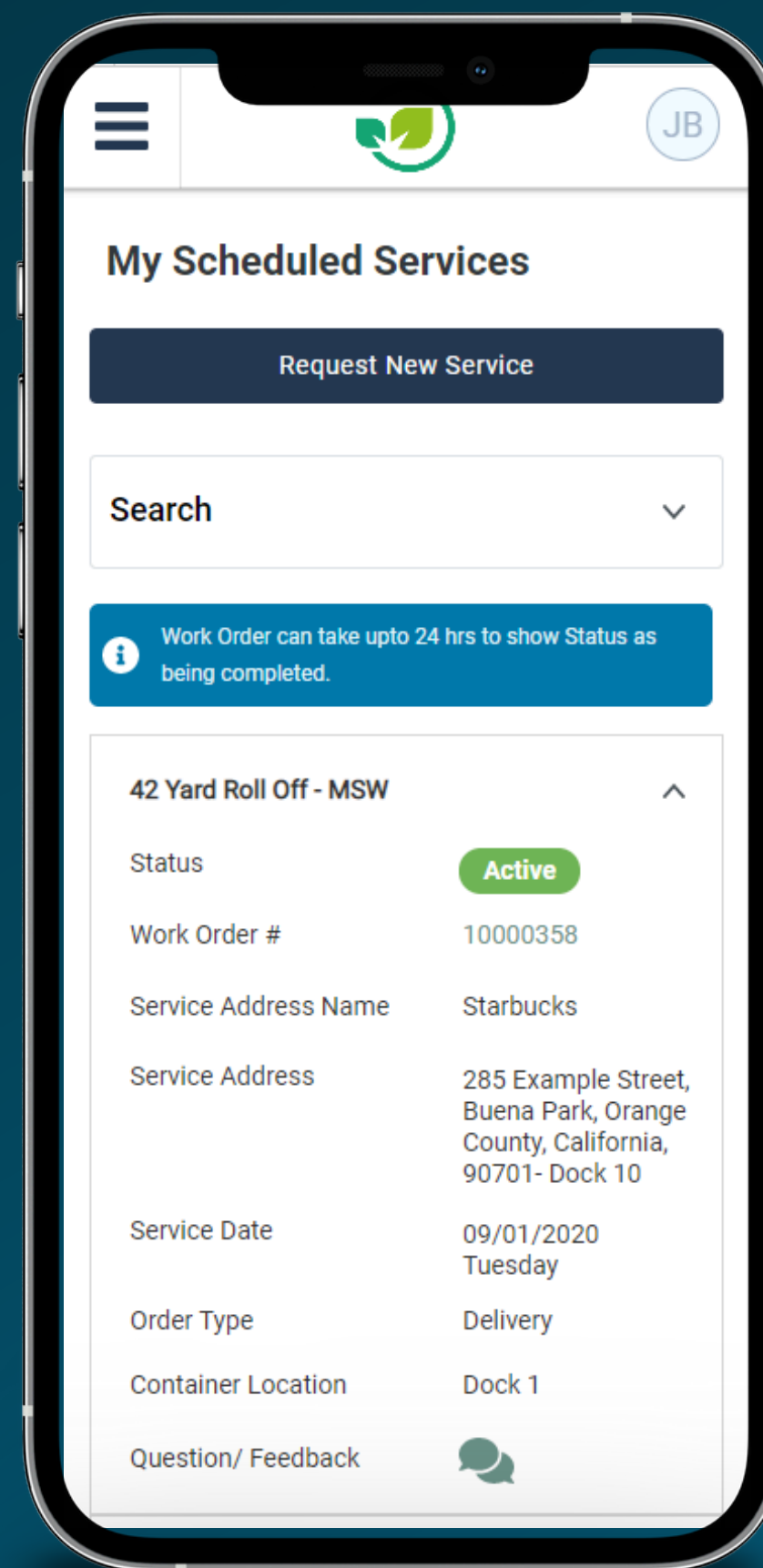
- Header:** Shows the breadcrumb path: "Homepage > BP360 Dashboard > New Customer Account, New Service Agreement".
- Left Sidebar:** Contains navigation icons for Home, Users, Documents, Reports, and Settings.
- Main Content Area:**
 - New Customer Account:** Includes dropdowns for Customer Type (Residential), Activation Type (Please Select Activation), Sales Rep (Please Select a Sales Rep), and Retention Rep (Please Select a Retention Rep).
 - Service Address:** Displays a verified residential address: "123 Washington Avenue Buena Park, Orange County, California, 90701".
 - Customer Details:** A section with a plus icon and a button "Add Customer Details".
 - Billing Address:** A section with a plus icon and a button "Add Billing Address".
 - Contacts:** A section with a plus icon and a button "Add New Contact".
- New Service Agreement - SLG 123ABC:**
 - SLG:** A dropdown menu showing "123 ABC" and buttons for "Send SLG for review", "Apply", "Copy SLG from nearby location", and "Map".
 - Mandatory Services:** A table with columns for Service, Service Frequency, and Rate. It lists "106 Gallon Container - MSW Residential" with a frequency of "1x Weekly (Monday)" and a rate of "\$28.00/mo".
 - Selected Templates:** A section with a dropdown menu showing "Selected Templates (0)" and an "Add" button.
 - Customer Contract Type:** A dropdown menu showing "Residential".
 - LOB:** A dropdown menu showing "Select LOB".
 - Container Size:** A dropdown menu showing "Select Container Size".
 - Material Type:** A dropdown menu showing "Select Material Type".
 - Show Services:** Radio buttons for "Display All" (selected) and "Only Extras".
 - Search and Reset:** Buttons for "Search" and "Reset".
 - Services:** A table with columns for Service, Service Frequency, and Rate. It lists "106 Gallon Container - MSW Mixed Waste" and "106 Gallon Container - Yard Waste" with a frequency of "1x Weekly (Monday)" and rates of "\$32.00/mo" and "\$26.00/mo" respectively.
 - Extras:** A table with columns for Service and Rate. It lists "Admin Fee", "Carry-Out", and "Site Visit" with rates of "\$12.00/mo", "\$28.00/mo", and "\$50.00/mo" respectively.
 - Other Requests (Not Currently Available In Area):** A section with two input fields: "Service Request" and "Material Requested", each with a "Create" button.
- Right Sidebar:** Contains an "Order Estimate" section with a table showing "106 Gallon Cart Residential" with a recurring monthly fuel surcharge. It also includes a "Subtotal" and a "View Service" button.

- 01 Data-driven decisions: Accurate, real-time data empowers informed decision-making.
- 02 Strategic planning: Comprehensive business reporting supports operational and business planning.
- 03 Trusted insights: World-class technology delivers reliable business intelligence.



Compliant Reporting.

WR1 ensures your waste and recycling management processes are legal, compliant and easy to report on.

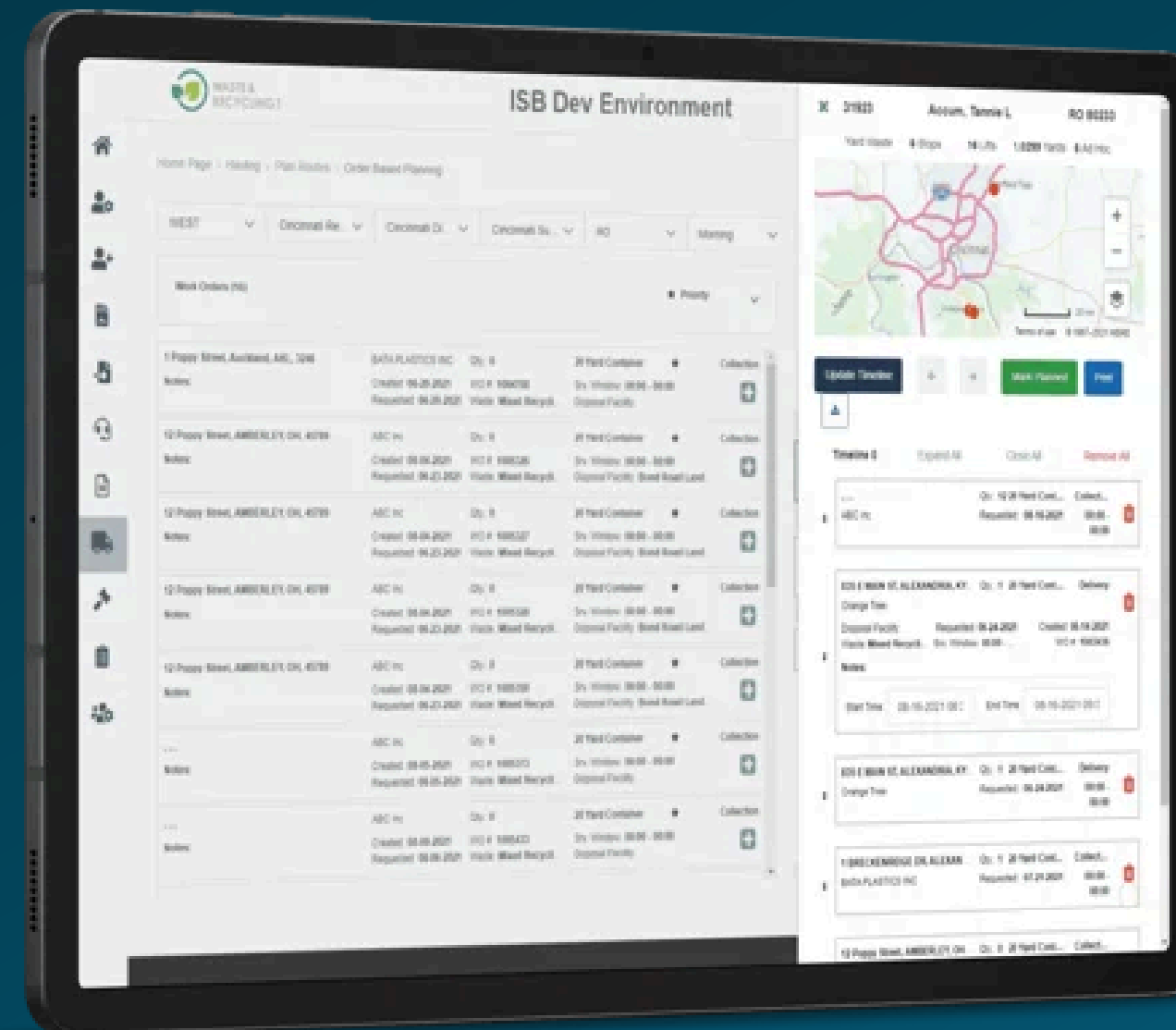


- 01 Complex reporting: Waste and recycling companies face numerous reporting requirements.
- 02 Efficient reporting: Quickly generate accurate reports to meet internal and external demands.
- 03 Compliance confidence: Ensure compliance with clear and reliable reporting.



Operational Efficiency.

The integrated nature of WR1 delivers huge increases in business and operational efficiency.



- 01 Profitability linked to efficiency: Operational efficiency drives business success.
- 02 Industry expertise: Deep understanding of waste management fuels solution development.
- 03 Enhanced performance: Our software boosts operational efficiency across your organization.



THE BEST RUN WR1



GLOBAL

© 2024 by ISB Global limited. All rights reserved. ISB, ISB Global, WR1 and other ISB products and services mentioned herein as well as their respective logos are owned by ISB Global Limited and may have trademark registrations pending. Data contained in this document is for informational purposes only, without representation or warranty of any kind, and ISB Global Limited shall not be liable for errors or omissions with respect to the materials. The materials are subject to change without notice.

