



SAP Sustainability Control Tower

Manage your Green Line like your Top- & Bottom-Line

March, 2023

Disclaimer

The information in this presentation is confidential and proprietary to SAP and may not be disclosed without the permission of SAP. Except for your obligation to protect confidential information, this presentation is not subject to your license agreement or any other service or subscription agreement with SAP. SAP has no obligation to pursue any course of business outlined in this presentation or any related document, or to develop or release any functionality mentioned therein.

This presentation, or any related document and SAP's strategy and possible future developments, products and or platforms directions and functionality are all subject to change and may be changed by SAP at any time for any reason without notice. The information in this presentation is not a commitment, promise or legal obligation to deliver any material, code or functionality. This presentation is provided without a warranty of any kind, either express or implied, including but not limited to, the implied warranties of merchantability, fitness for a particular purpose, or non-infringement. This presentation is for informational purposes and may not be incorporated into a contract. SAP assumes no responsibility for errors or omissions in this presentation, except if such damages were caused by SAP's intentional or gross negligence.

All forward-looking statements are subject to various risks and uncertainties that could cause actual results to differ materially from expectations. Readers are cautioned not to place undue reliance on these forward-looking statements, which speak only as of their dates, and they should not be relied upon in making purchasing decisions.





Content

1

Context and positioning

2

Solution Architecture

3

Solution Capabilities Overview

4

Key Takeaways

The ESG expectations are continually growing

RECORD

ESG transparency along the value chain

Data spanning multiple sources, formats and organizations without the granular level of details and precision

REPORT

New and increasing ESG reporting requirements

Multiple frameworks and standards to report against and fulfilling the respective requirements

ACT

Sustainability touches all business processes

Sustainability strategy and initiatives disjoint from corporate strategy, business models and processes

SAP Holistic Steering & Reporting

A part of the SAP Cloud for Sustainable Enterprises

Business Network

for carbon data sharing

Industry Capabilities

to solve your specific challenges

Partner Ecosystem

geared towards sustainability

Focus today

Holistic Steering and Reporting – SAP Sustainability Control Tower

Record – Report – Act

Zero Emissions

with Climate Action

Decarbonize your entire value chain (scope1-3)
based on actual business transactions

Zero Waste

with Circular Economy

Incorporate **circularity** into your supply chain
& create sustainable business models

Zero Inequality

with Social Responsibility

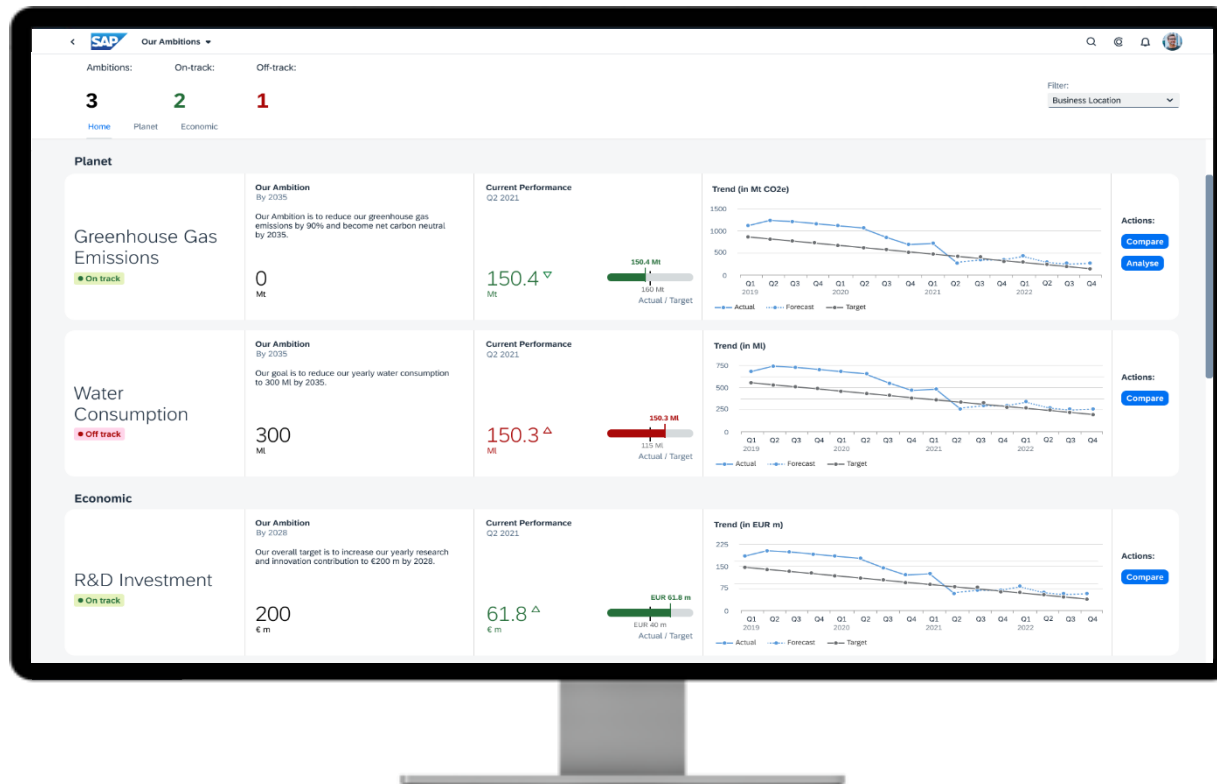
Understand the **impact of your business**
on **people and the society**

SAP S/4HANA, Customer relationship management, Human capital management, Spend Management and Business Network

SAP Business Technology Platform

SAP Sustainability Control Tower

Automated, auditable, compliant reporting with actual data & insights to embed sustainability into business processes



Record: Actuals instead of averages

Record ESG factors with out-of-the-box integration with SAP systems for faster time to value & granular data visibility based on actual data, not averages

Report: Audit-ready ESG metrics

Report regulatory compliant ESG metrics covering common frameworks based on an open & extensible solution with the largest ESG ecosystem

Act: ESG embedded in business processes

Act by planning your future with actionable insights, forecasts and setting targets; track initiatives & optimize business processes to make an impact



Content

1

Context and positioning

2

Solution Architecture

3

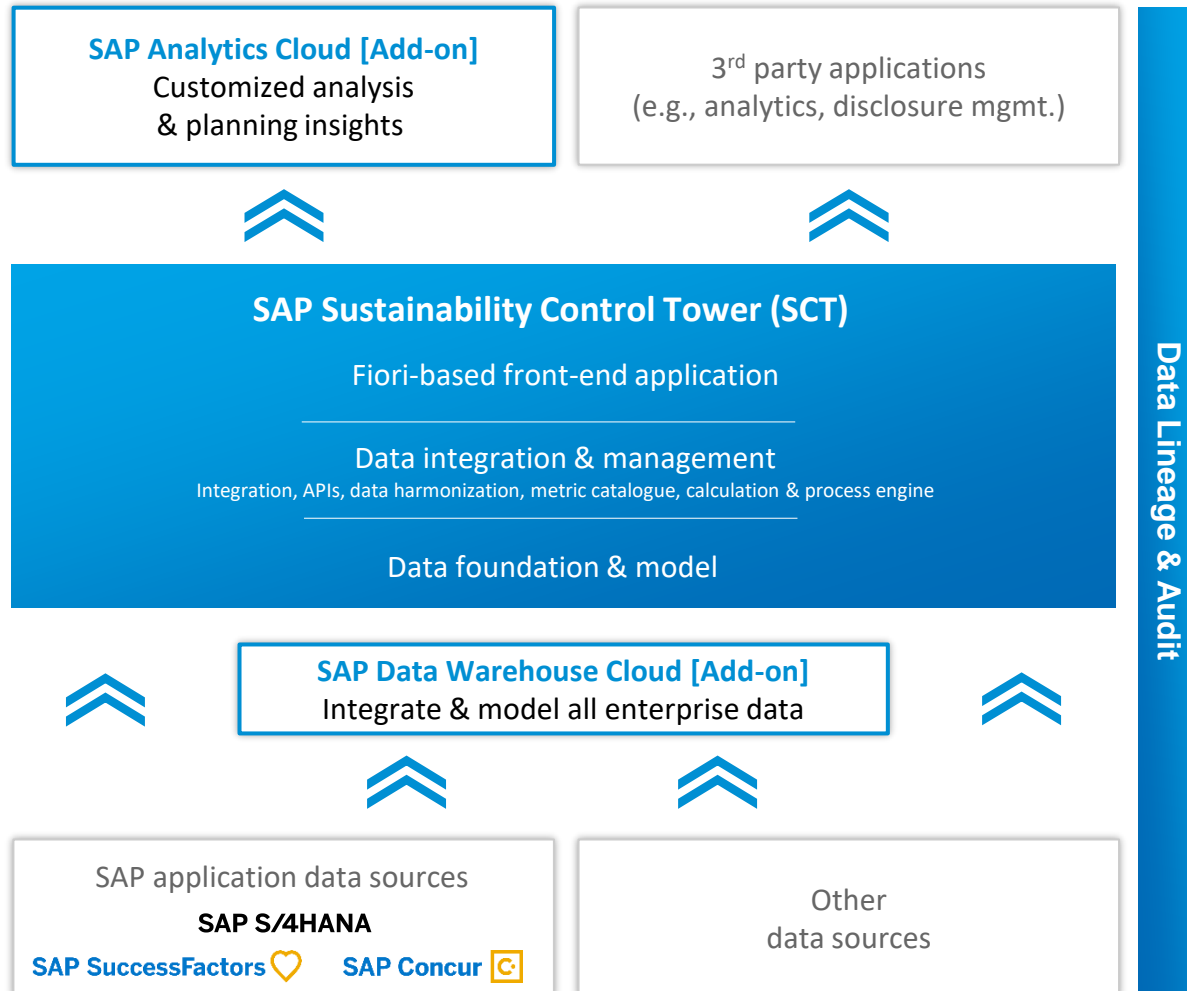
Solution Capabilities Overview

4

Key Takeaways

Achieving Holistic Steering and Reporting

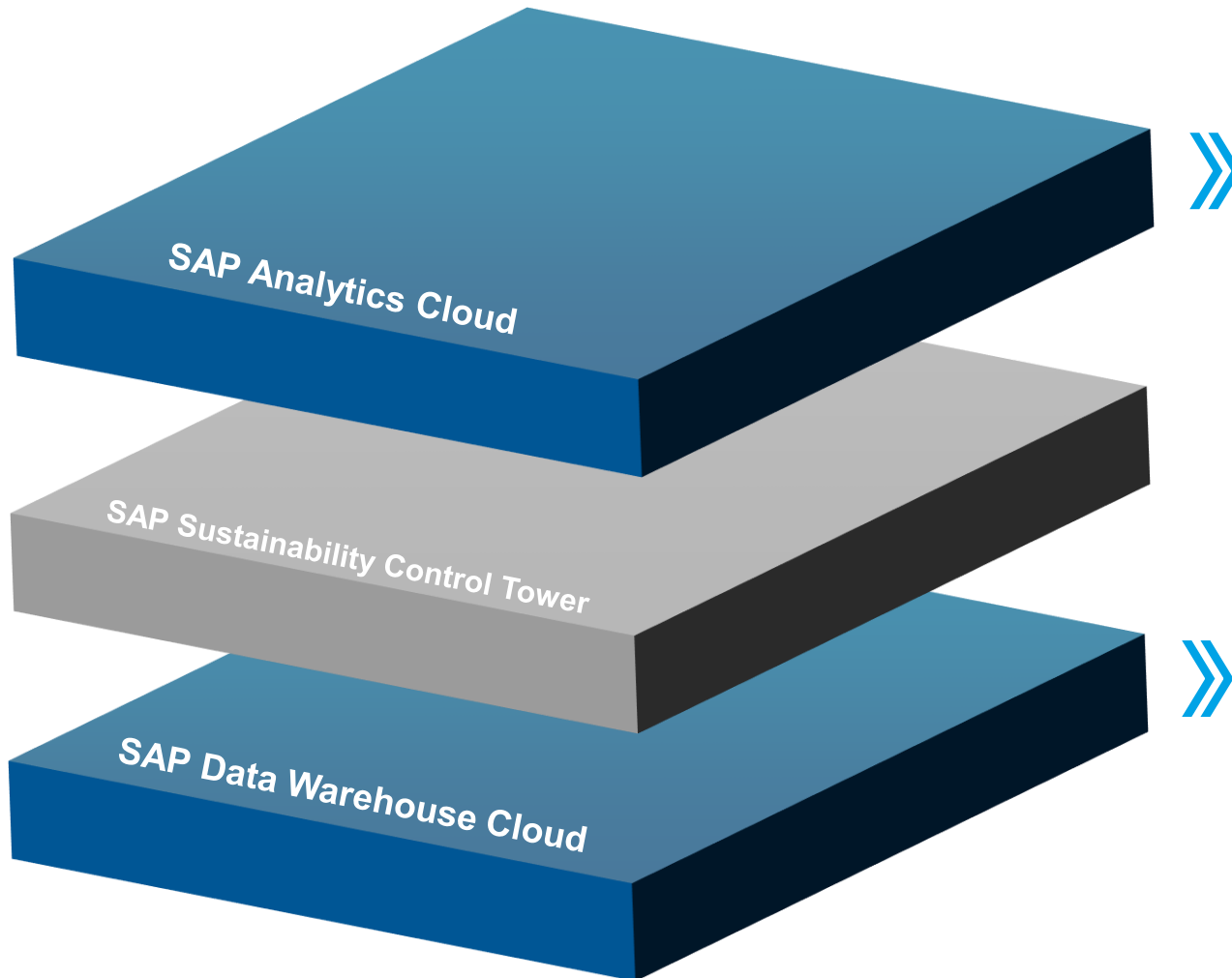
Empower your business to act with ESG transparency along the value chain



- **Harmonized insights** by consolidating, modelling and enriching ESG, financial and operational data enabling boardroom and business-level decisions
- **ESG performance management** with enterprise planning, predictive forecasting, what-if simulations and impact analysis across the value chain
- **Pre-built data models** to support established reporting frameworks and customer-specific adaptations based on SAP, non-SAP, structured and unstructured data
- **Embed sustainability dimension** into business applications and processes through enterprise data integration and modelling and enriched partner content

Broaden the impact of your ESG projects

Extend the SAP Sustainability Control Tower and transform your data strategy



Extend analytics to reduce environmental footprint at the source, optimize supplier decisions and foster inclusive culture across the organization

Gain deeper insights into your ESG scores to make smart investment decisions for your sustainability programs and diversity spend

Simulate outcomes and evaluate sustainability initiatives with what-if analysis and scenario planning

Integrate sustainability, financial, and operational planning on one enterprise planning foundation

Unify all data with a single business semantic service to **make the most impactful decisions**

Simplify the integration of 3rd party data to **understand the influence of external forces** on your operations

Incorporate your existing data in SAP Business Warehouse (BW) in the cloud to **enrich analysis and accelerate innovation**



Content

1

Context and positioning

2

Solution Architecture

3

Solution Capabilities Overview

4

Key Takeaways

Solution Capabilities | OVERVIEW

Providing integrated end to end capabilities for holistic steering and reporting

RECORD



Sustainability Metric management



Data Sourcing & Integration



Data Quality assurance



Data enrichment & calculation



Period closing

REPORT



KPI Tracking



Analytics



Reporting



Benchmarking*

ACT



Target setting and planning



Simulation and forecasting*



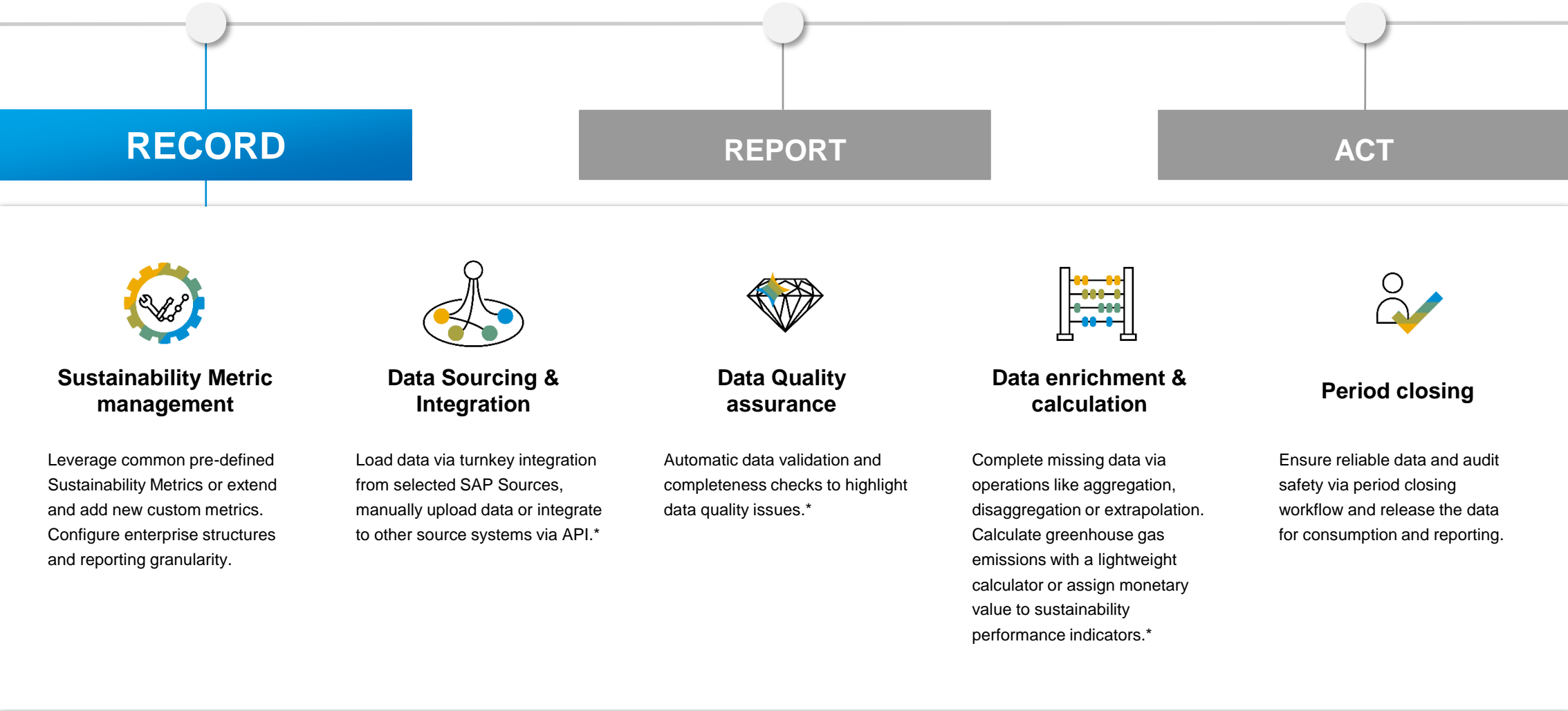
Initiatives tracking*



Embedding in business processes*

Solution Capabilities | Record

Create a foundation of accurate, granular, auditable financial and non-financial data from SAP and non-SAP sources to support ESG



*Some capabilities are planned as part of Sustainability Control Tower roadmap and may not be available today

Sustainability Metric Management

Configure and manage Sustainability Metrics relevant to your business with guided data sourcing

Simple definition and monitoring

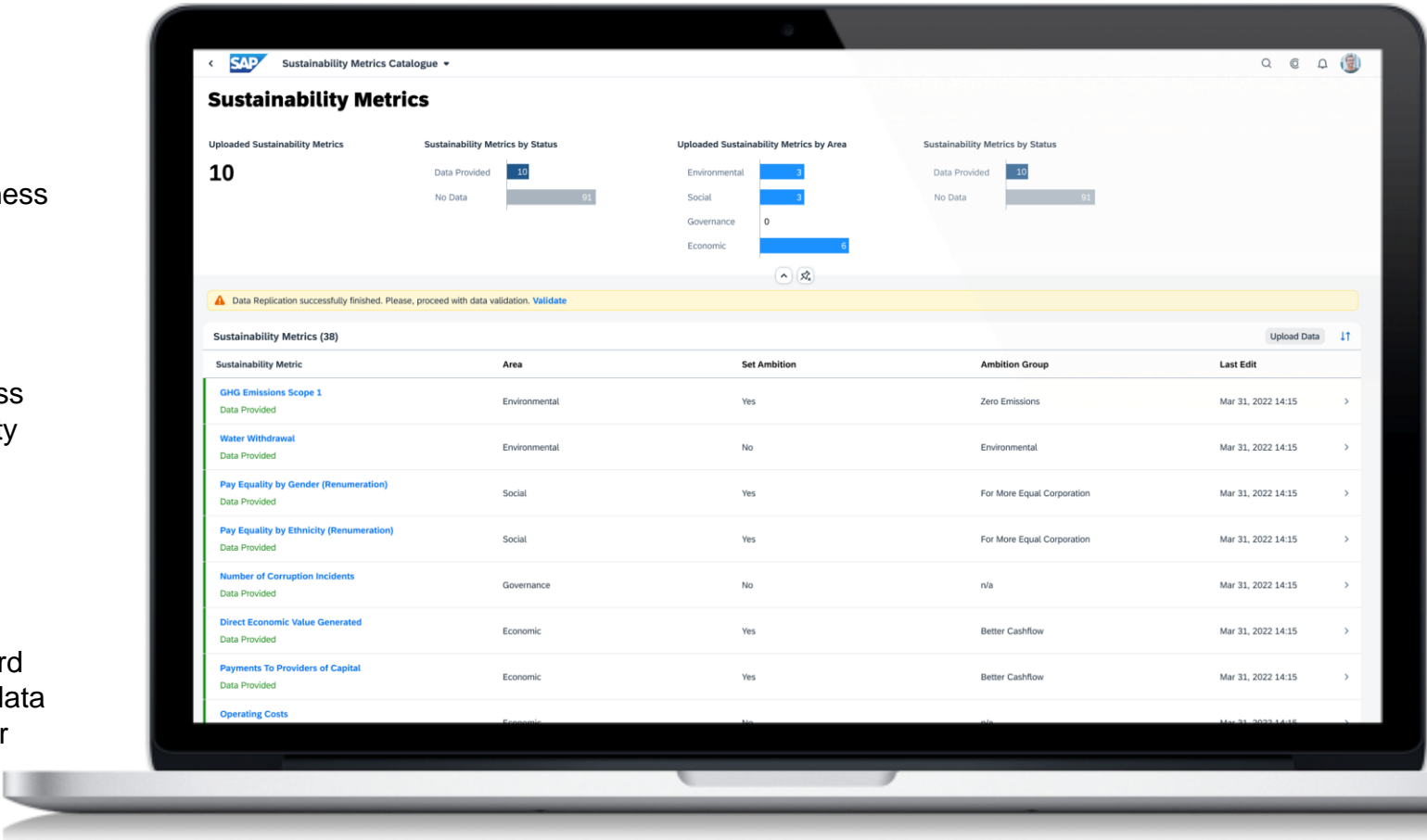
Manage all available Sustainability Metrics in a single place, including definition and reporting frameworks assignments as well as metric specific data completeness monitoring.

Flexible Configuration

Activate Sustainability Metrics relevant for your business and define the Leading Hierarchy, Reporting Granularity and whether Own Ambitions should be maintained.

Guided Data Recording

Upload sustainability data records for Sustainability Metrics. Based on the user selection of Metrics a wizard will guide the user which data must be provided. The data may be sourced either from connected data sources or via manual file upload.



Note: Some capabilities are planned as part of Sustainability Control Tower roadmap and may not be available today.

Data Sourcing and Integration

Improve data quality and data provenance by sourcing sustainability data from connected systems of record

Guided Experience

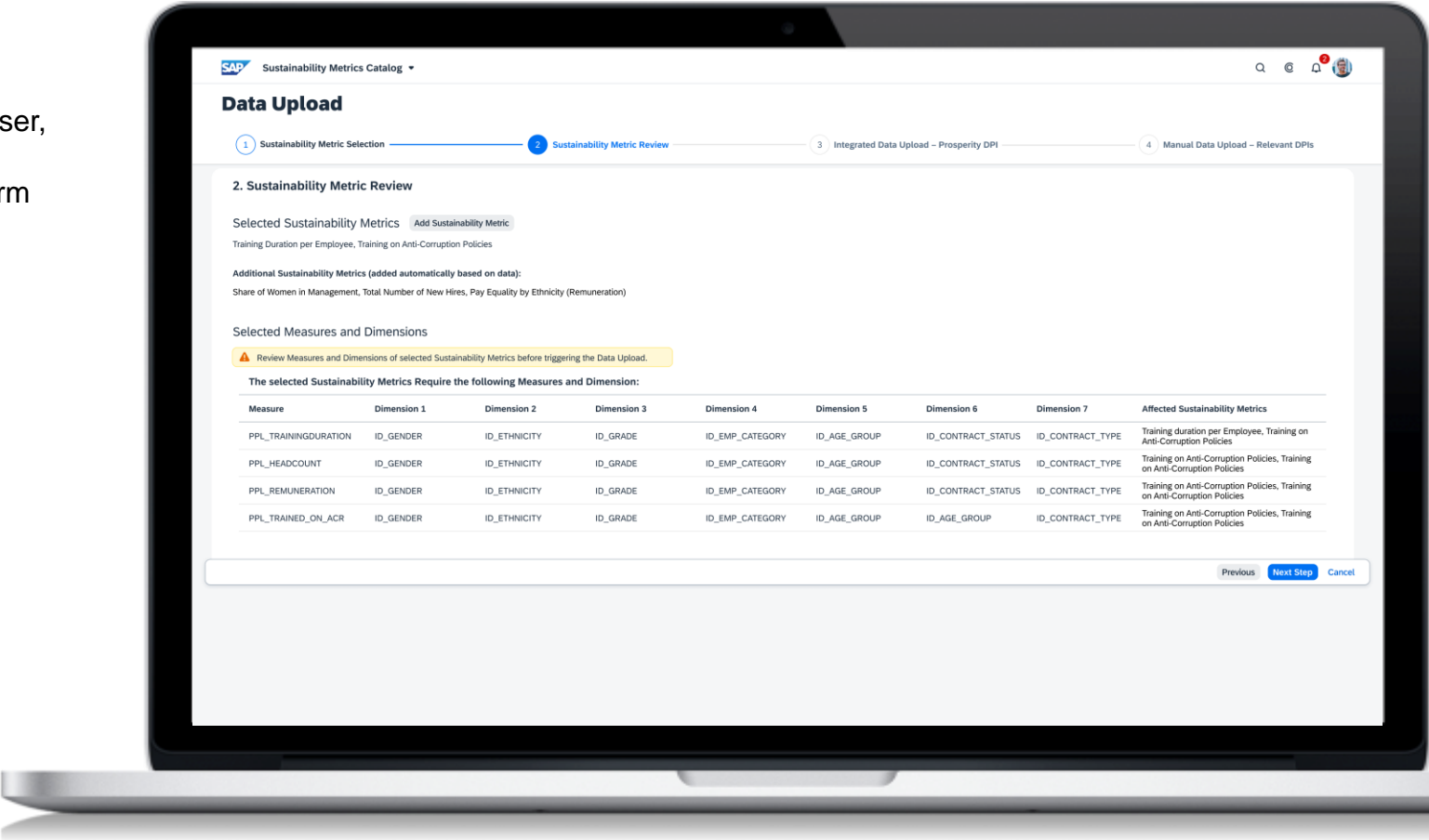
For all Sustainability Metrics that are selected by the user, the tool will provide guidance which measures and dimensions must be recorded to successfully perform the Metric calculation.

Source Data from Connected Systems

Automatically upload records from the source systems leveraging a pre-built integration; e.g. SAP S/4HANA Cloud for Finance.

Open Data Provider Interfaces

All data for Sustainability Metrics may be uploaded via Data Provider interfaces as CSV or XSLX files. This allows for the upload of required sustainability data, which currently may not be present in systems of record.



Note: Some capabilities are planned as part of Sustainability Control Tower roadmap and may not be available today.

Data Quality and Assurance

Automatic data validation and completeness checks to highlight data quality issues

Input data controls

Standard technical and consistency checks flag and sort out erroneous data. Allow responsible business user to correct the data by manual adjustments or reload corrected data again

Data completeness checks

Understand incomplete and missing data in order to mitigate gaps by manual action or by an automated business rule to allow a faster period closing process and ensure high data quality

Configurable plausibility checks

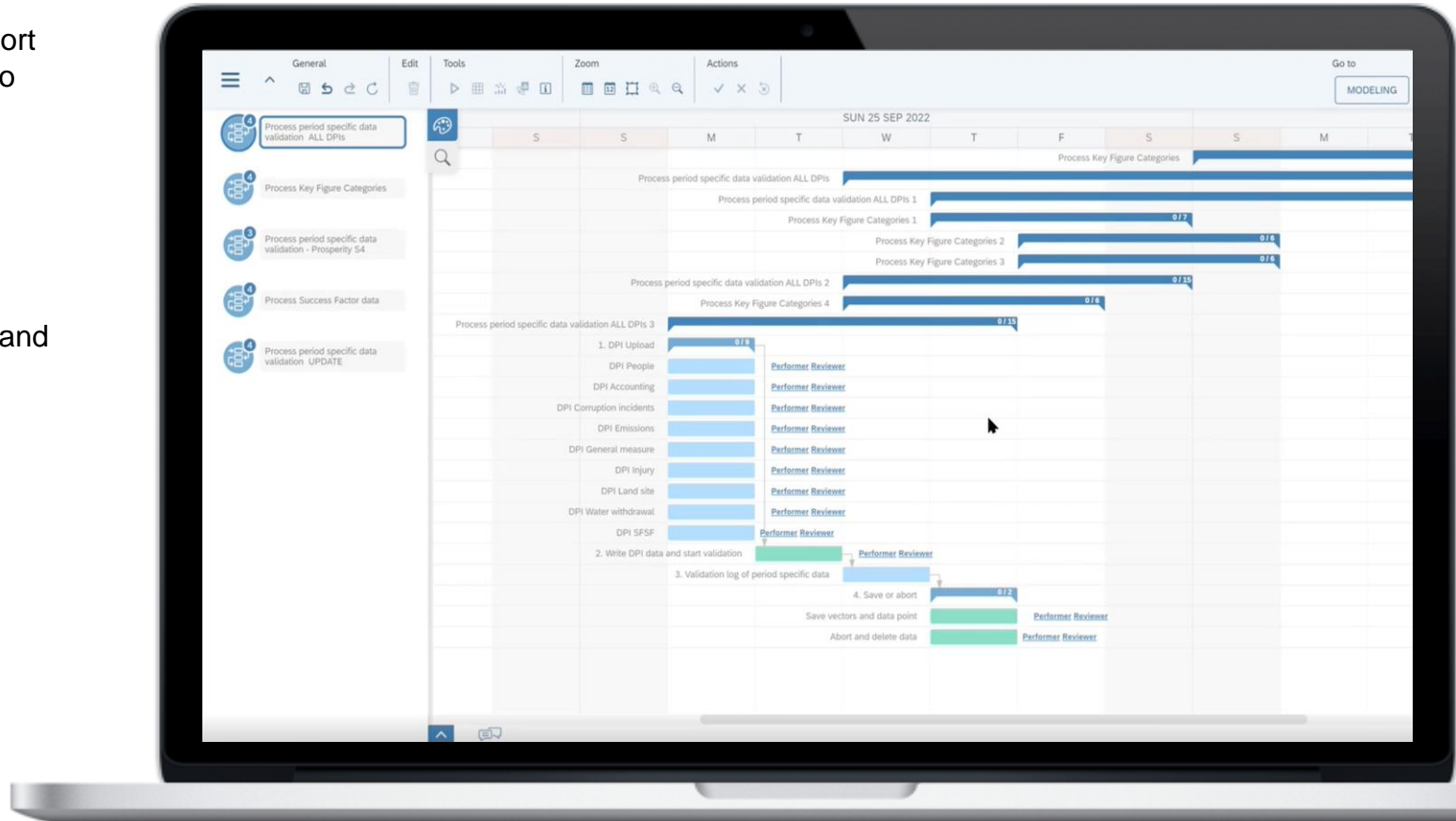
Mitigate non technical input data errors by showing deviations to previous periods, which allows to react immediately and initiate corrective actions

Transparency

Track validation results and errors easily with detailed error and warning messages, audit logs and validation reports

Review/Approval Workflows

Define which user groups may perform the data upload and which user groups must approve the data before releasing the data for consumption.



Note: Some capabilities are planned as part of Sustainability Control Tower roadmap and may not be available today.

Data Enrichment and Calculation

Complete missing data via configurable and flexible operations

Dealing with missing data

Run automated estimations and extrapolations on missing data based on predefined, customer specific business rules

Run calculations

Use calculation logic for valuations, allocation or conversions of ESG data to track your sustainability performance and targets

Flexible configuration

Apply specific customization to run business rules and calculations. A central steering table makes the use of custom factors, reference data or formulas possible



Note: Some capabilities are planned as part of Sustainability Control Tower roadmap and may not be available today.

Period Closing

Ensure that right data is in right place in good quality and in due time

■ Cascaded and guided process flow

Have one central process template covering all relevant periodic activities with regards to the closing process for all selected Sustainability Metrics.

■ Rigor like in Finance

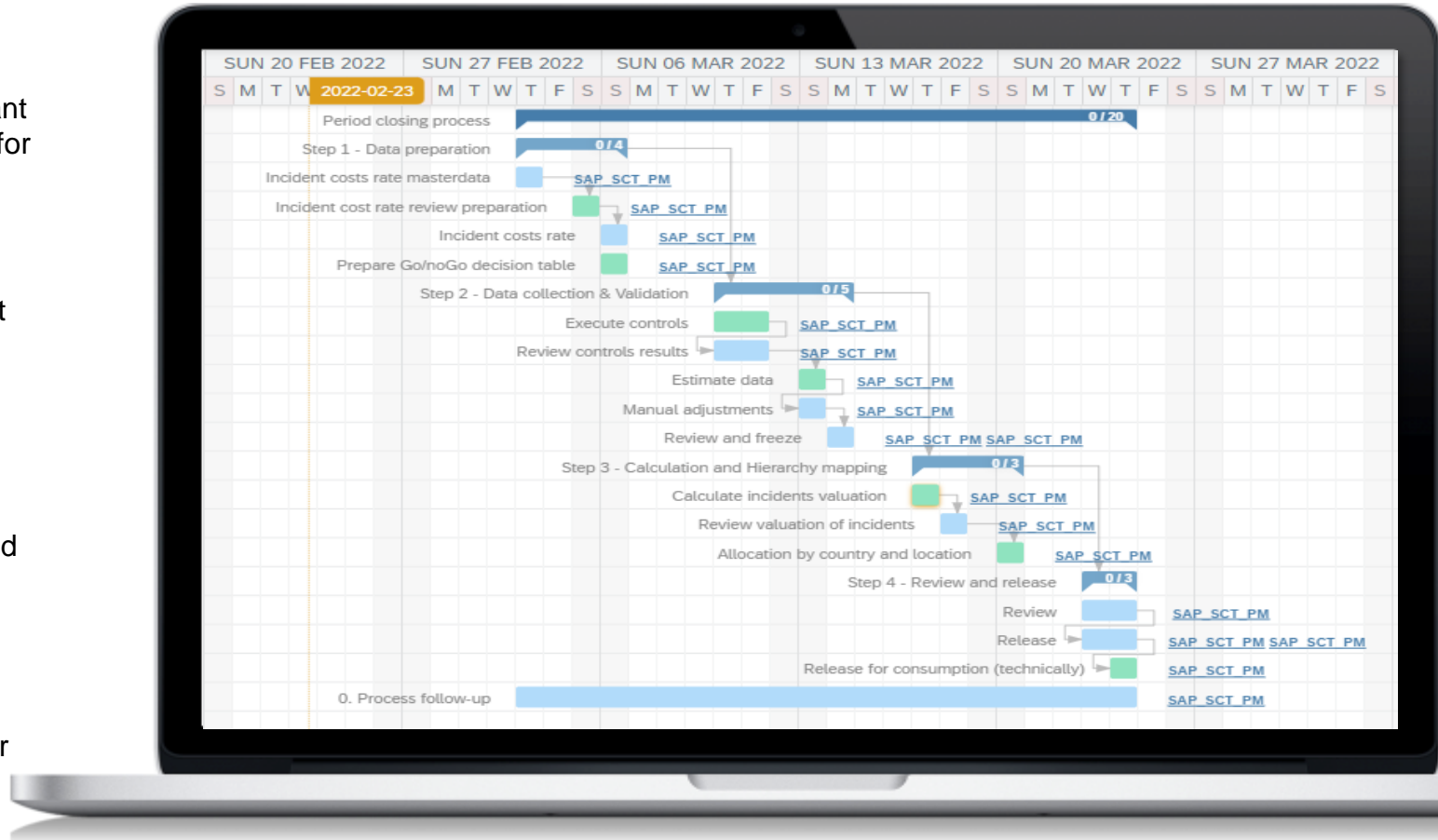
Maximize value and quality through a strict and robust procedure of verifying and adjusting data for Sustainability Metrics

■ Period Soft closing

Making a faster release of Sustainability data possible by using predefined semantic and technical checks and business rules.

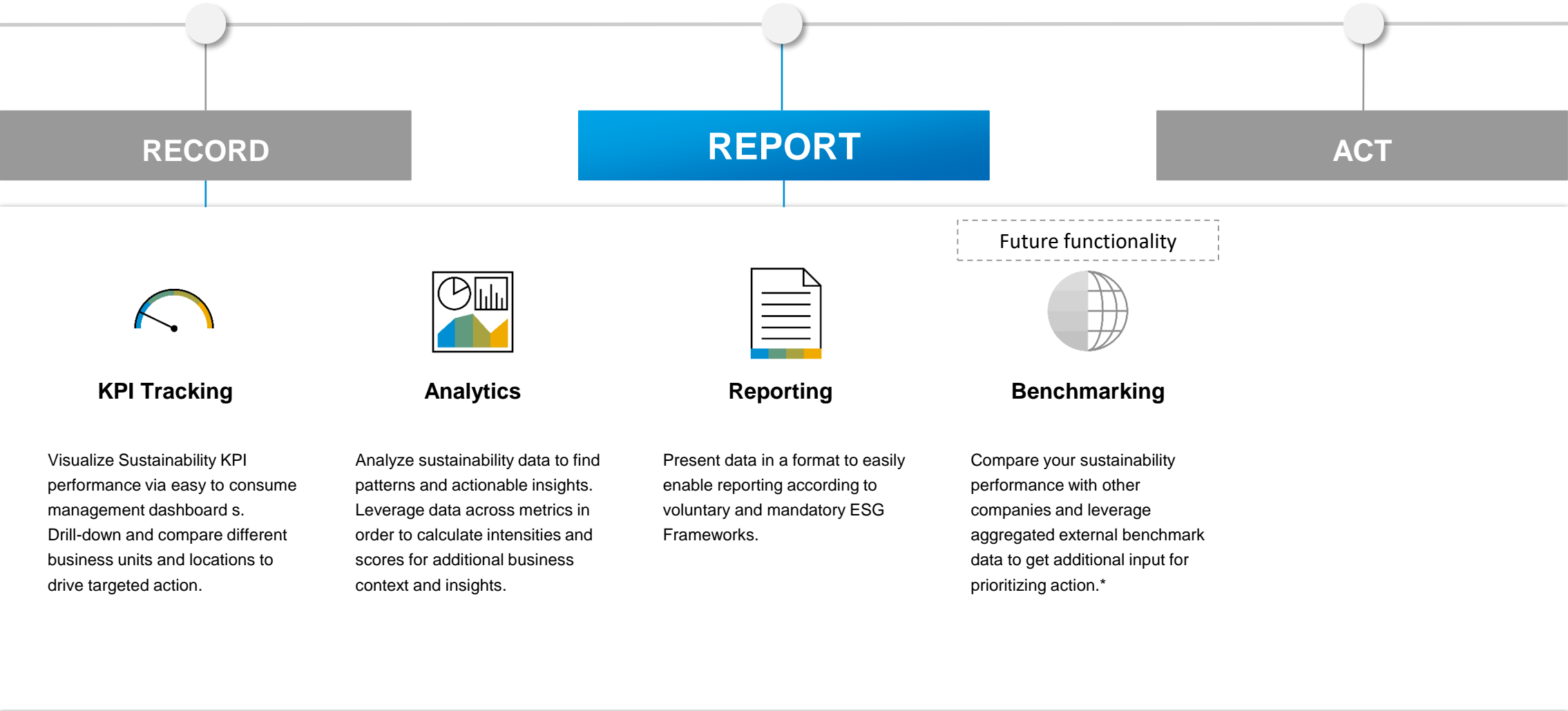
■ Auditability

Demonstrate transparent data flows and transactions via audit reports including data origin, data stages user activity logs.



Solution Capabilities | Report

Creating actionable insights and facilitate external reporting requirements



*Some capabilities are planned as part of Sustainability Control Tower roadmap and may not be available today

KPI Tracking

Visualizing the Sustainability KPI performance in an easy to consume dashboard via the Ambitions App

Setting long-term ambitions

Create clarity by defining a long-term ambition and operationalize via granular target setting

Visualizing current performance

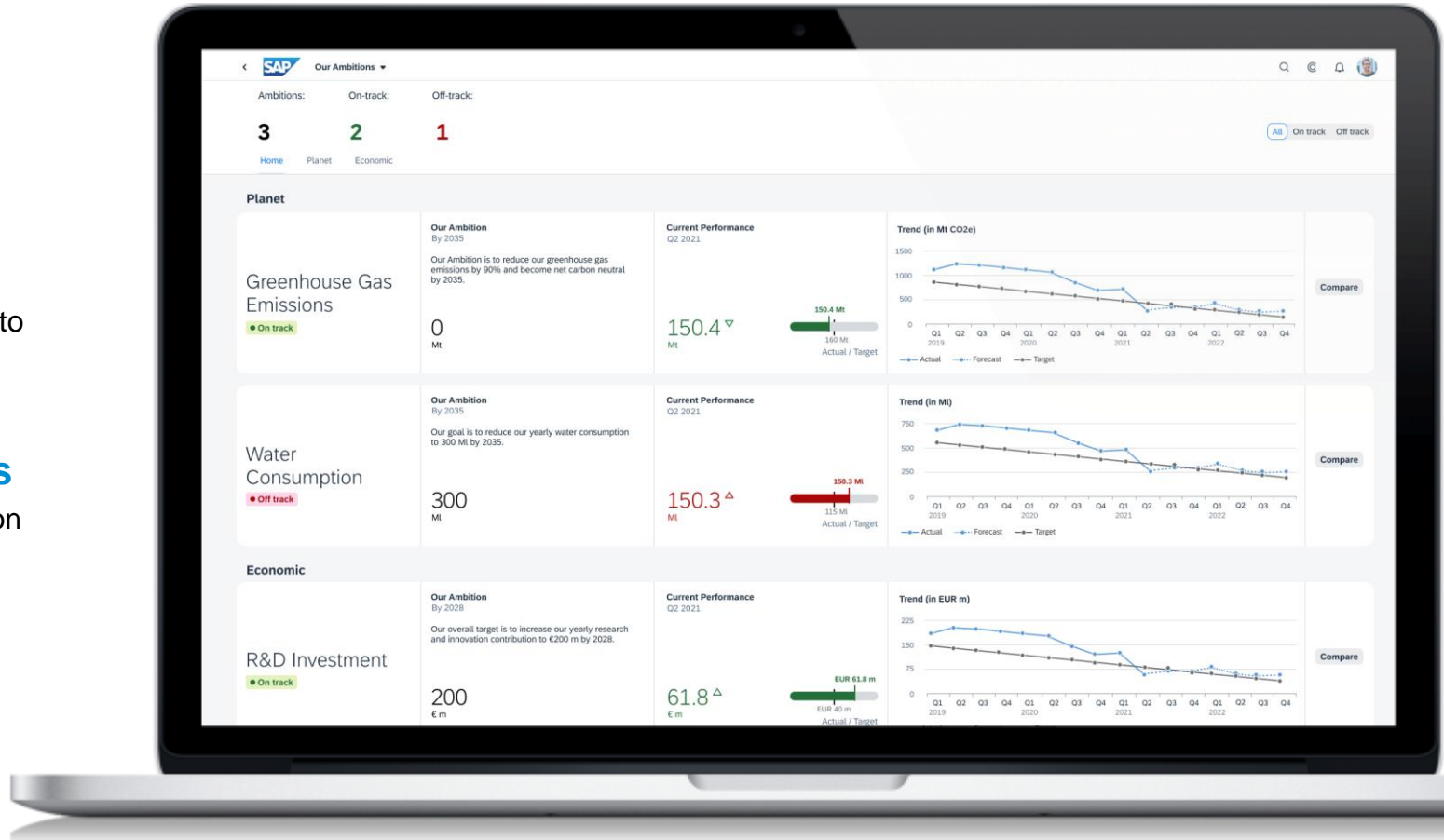
Compare current performance against target in order to drive targeted action toward reaching ambitions

Analyze current and forecasted trends

Understand past performance and take action based on expected future trend

Drilldown and compare

Drive targeted action via drill-down and comparing different business units and locations



Note: Some capabilities are planned as part of Sustainability Control Tower roadmap and may not be available today.

Analytics*

Analyze sustainability data to find patterns and actionable insights for example via the Greenhouse Gas Emissions Analytics Dashboard*

Coming Soon
Subject to Change

Visualize Data

Visualize data following best practices (i.e. GHG Protocol) or create custom dashboards to end users a clear picture of the current performance .

Explore Data

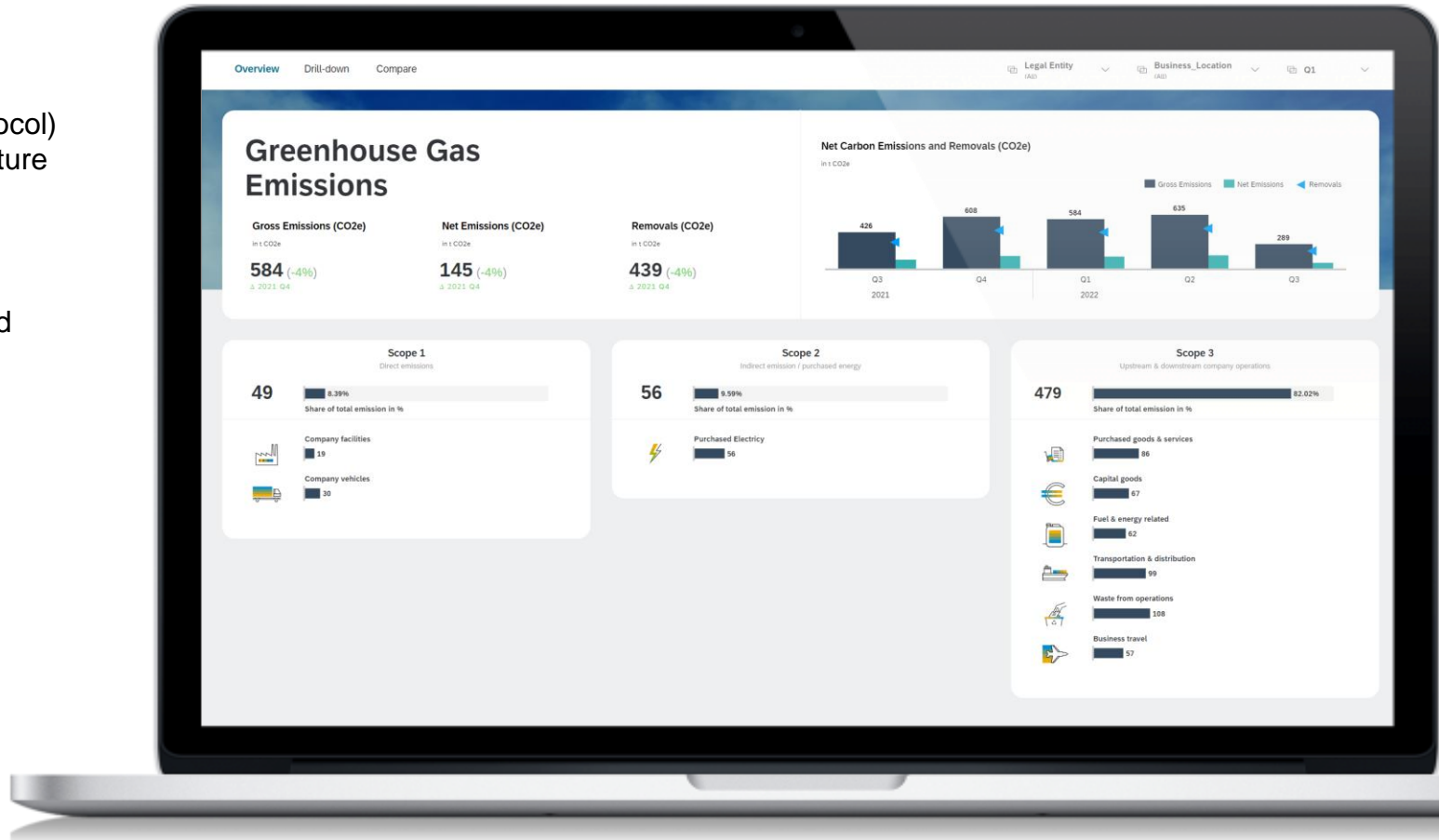
Intuitively explore entire data sets to better understand initial patterns and points of interests.

Extend

Define custom calculations, calculated dimensions, aggregations and more

Leverage automated insights

Leverage advanced features like Smart Insights to automatically add forecasts and find top influencers in your data



* Requires SAP Analytics Cloud Enterprise

Reporting*

Present data in a format to easily enable reporting according to voluntary and mandatory ESG Frameworks.

Reflect ESG Frameworks

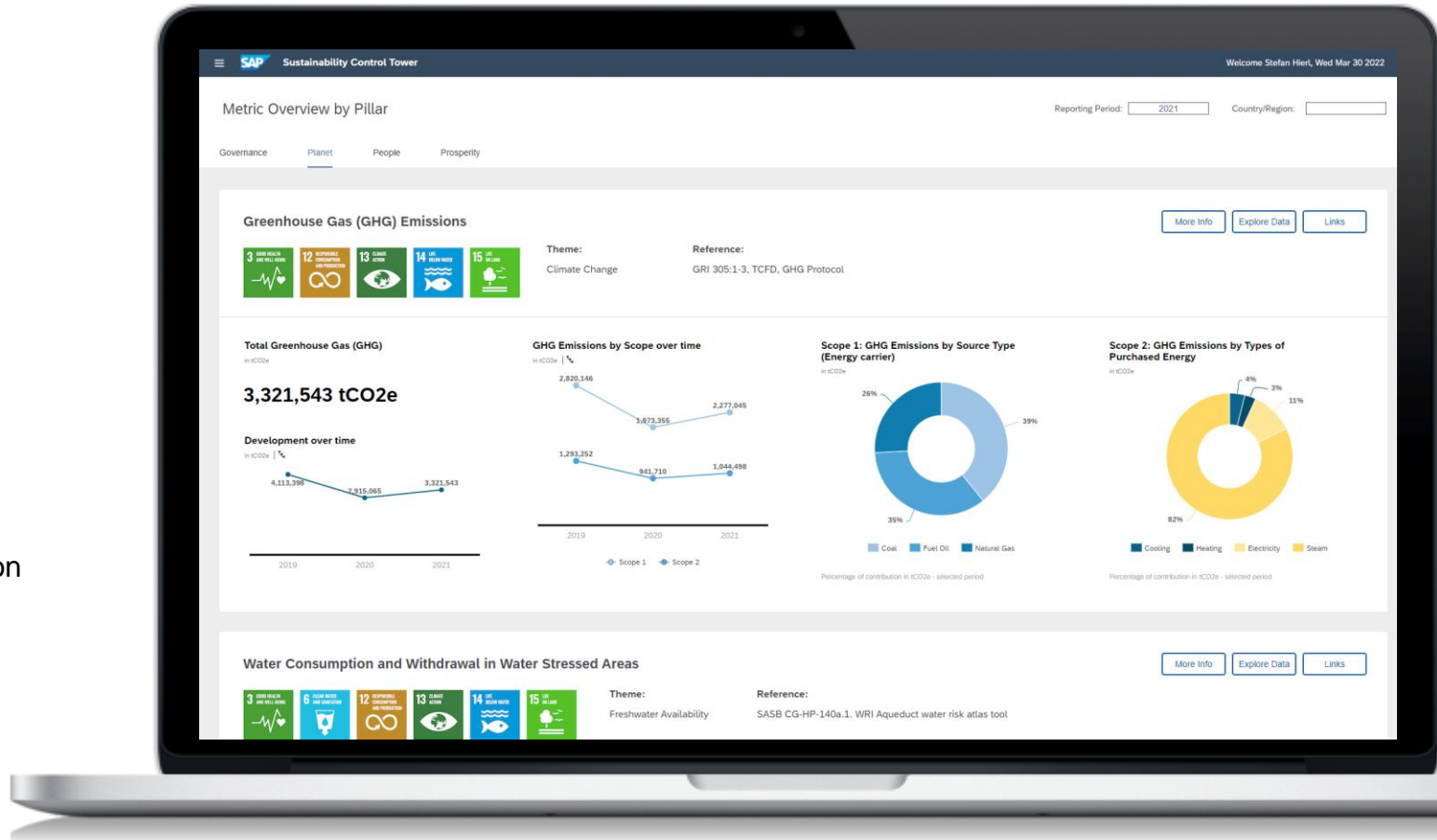
Leverage pre-define dashboards or create your own reflecting the data requirements of ESG Frameworks

Design Reports

Export your visualizations as multi-page reports with

Distribute regular updates

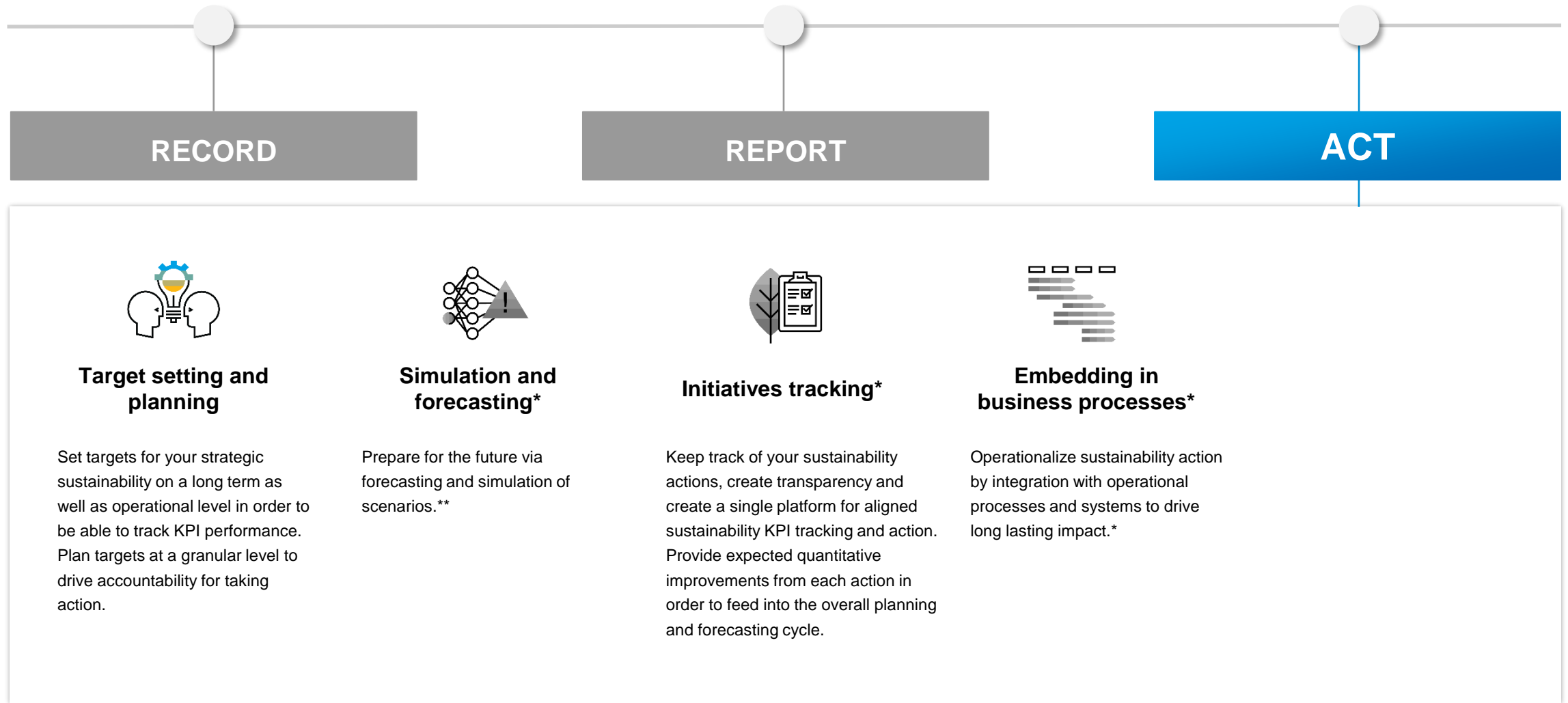
Understand past performance and take action based on expected future trend



* Requires SAP Analytics Cloud Enterprise

SAP Sustainability Control Tower | Functionalities – Act

Track sustainability initiatives and embed actions into your business processes



*Some capabilities are planned as part of Sustainability Control Tower roadmap and may not be available today

** Requires SAP Analytics Cloud Enterprise

Target Setting and Planning

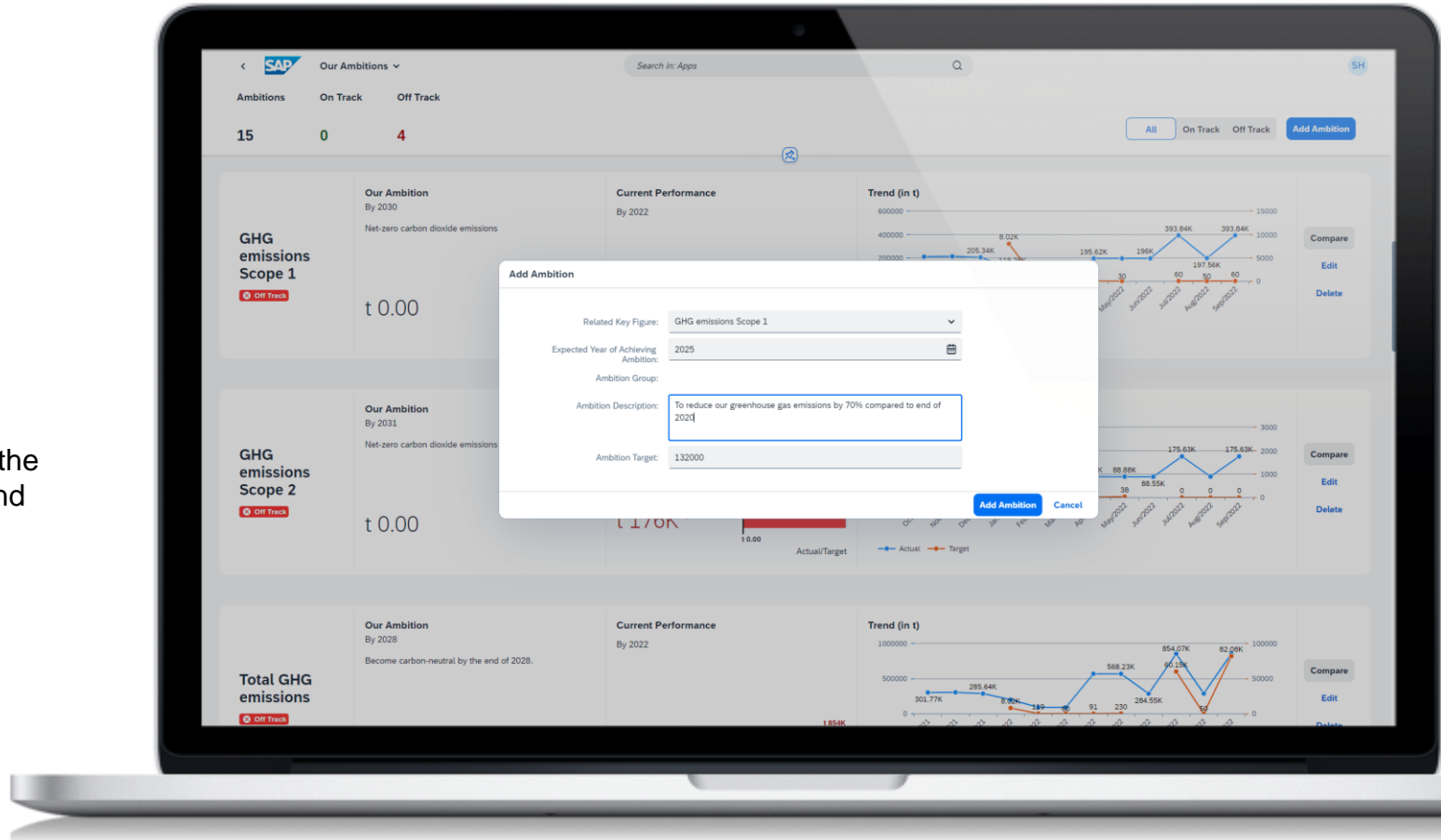
Chart a path to reach your long term sustainability ambitions

Set your long term Ambition

Articulate the long term ambition for strategic sustainability KPIs

Define granular Targets

Set granular targets to define a path toward reaching the long term ambition at the level of individual location and business units.



Simulations and Forecasting

Execute what-if scenarios on your data to simulate potential outputs of your environmental actions

Analyze different actions

Analyze the effects of different actions on sustainability results.

What-if analysis at every granularity

Produce simulation results for every dimension and granularity for granular target setting



Initiatives Tracking

Close the insights to action loop

Coming Soon
Subject to Change

Provide transparency on actions

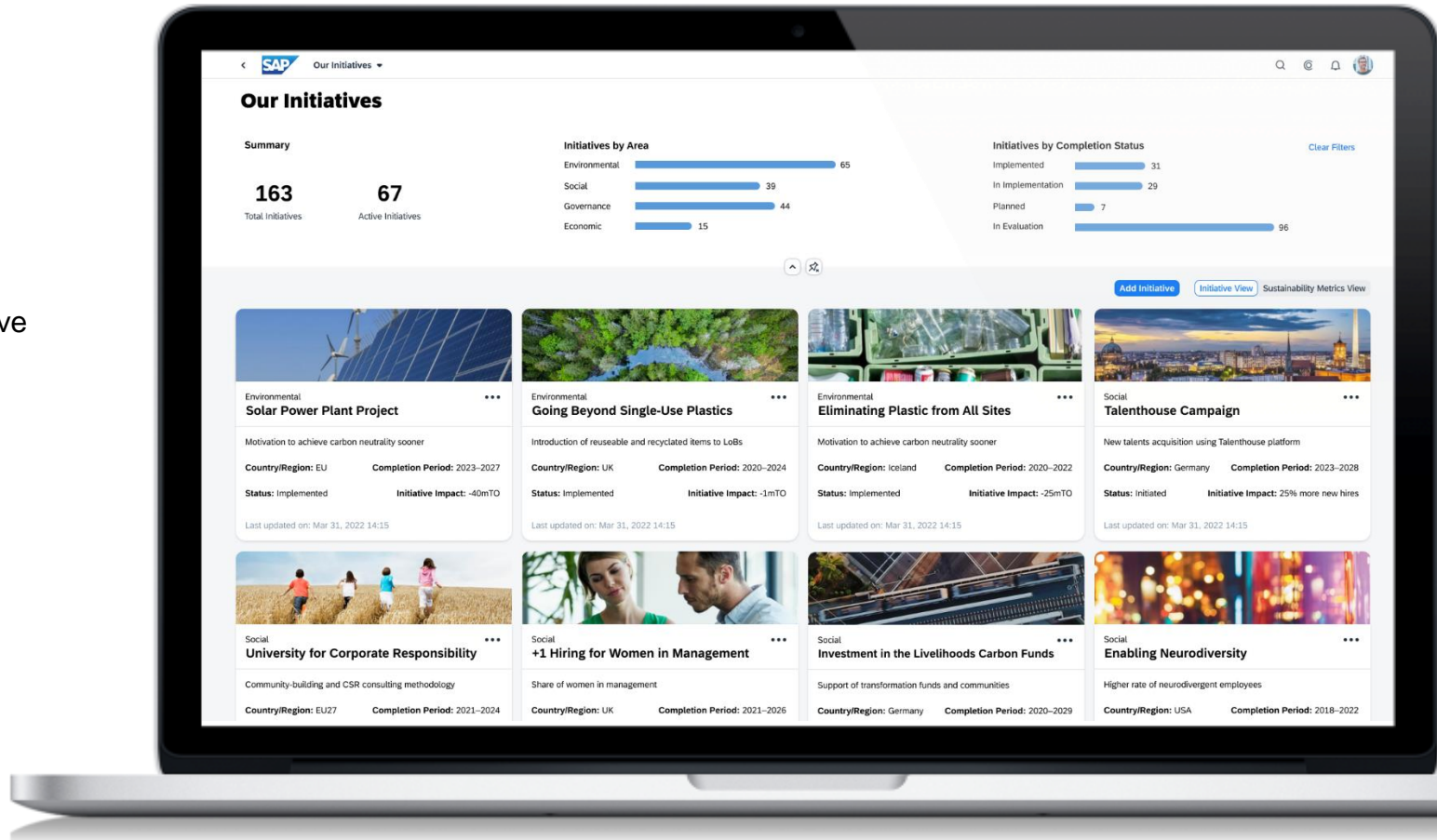
Create an overview of completed, active and planned sustainability initiatives and actions

Capture estimated impact

Provide quantitative impact estimation for each initiative to know if current activity is enough to meet future sustainability targets

Close the insight to action loop

Create a connection between KPI reporting, target achievement and related actions.





Content

1

Context and positioning

2

Solution Architecture

3

Solution Capabilities Overview

4

Key Takeaways

Key Takeaways

SAP Sustainability Control Tower



Enhance productivity and reliability via automated integration

Leverage predefined integration to pull data from SAP and other systems, easing data collection and allowing you to centralize all of your relevant data in one place.



Evolve from reporting to steering

Go beyond reporting by continuously bringing sustainability insights back into your business processes so that you can make more responsible decisions.



Extend content and functionality

Build on pre-defined content with your own metrics, emission calculators, templates, and more to meet your evolving sustainability needs

Advanced platform to support constantly evolving needs for Sustainability Reporting and Holistic Steering

An aerial photograph showing a large, calm lake on the left side, reflecting the sky. On the right side, a paved road with yellow lane markings curves through a dense, green forest. A small white car is visible on the road. The text "THANK YOU" is overlaid on the lake area in white, bold, sans-serif font.

THANK YOU

Contact:

APPENDIX

Sustainability metrics overview SCT new release¹

SCT comes with a set of predefined very commonly used sustainability metrics (part of metric catalogue)

Environmental

Metric	Reference
GHG Emission Scope 1	GRI 305 1-3
GHG Emissions Scope 2	GRI 305 1-3
GHG Emissions Scope 3	GRI 305 1-3
Water Withdrawal	GRI 303-3
Water Consumption	GRI 303-5
Land Use – Area	GRI 304-1
Land Use – Sites	GRI 304-1

Social

Metric	Reference
Gender representation in Management	GRI 405-1b
Median Workforce Age	GRI 405-1b
Pay equality by Gender (Remuneration)	GRI 405-2
Pay equality by Gender (Base salary)	GRI 405-2
Pay equality by Ethnicity (Remuneration)	GRI 405-2
Pay equality by Ethnicity (Base salary)	GRI 405-2
Wage Level	GRI 202-1
Level of CEO Compensation	GRI 202-1
Work-related incidents	GRI 403
Work-related fatalities	GRI 403
Incidents per million hours worked	GRI 403
Training duration per employee	GRI 404-1
Training expenditure	GRI 404-1
Rate of new hires	GRI 401-1
Total number of new hires	GRI 401-1
Rate of turnover	GRI 401-1
Total number of turnover	GRI 401-1

Governance

Metric	Reference
Gender representation in Governance Body	GRI 2
Training on Anti-Corruption	GRI 205-2
Number of Corruption Incidents	GRI 205-3

Economic

Metric	Reference
Revenue	GRI 201-1
Operating costs	GRI 201-1
Employee wages and benefits	GRI 201-1
Payments to providers of capital	GRI 201-1
Payment to government	GRI 201-1
Community investments	GRI 201-1
Financial assistance received from the government	GRI 201-4
Capital expenditures	IAS 7, US GAAP ASC 230
Depreciation	IAS 7, US GAAP ASC 230
Share buybacks	IAS 7, US GAAP ASC 230
Dividend payments	IAS 7, US GAAP ASC 230
Total global tax	GRI 201-1
Corporate income taxes	GRI 201-1
Property taxes	GRI 201-1
Non-creditable VAT	GRI 201-1
Other sales taxes	GRI 201-1
Employer-paid payroll taxes	GRI 201-1
Other taxes	GRI 201-1
Total R&D expenses	US GAAP ASC 730

1. Selection based on World Economic Forum - Stakeholder Capitalism Core Metrics