



SAP Holistic Steering & Reporting – L1 Solution Overview

Manage your Green Line like your Top- & Bottom-Line

January, 2023

Disclaimer

The information in this presentation is confidential and proprietary to SAP and may not be disclosed without the permission of SAP. Except for your obligation to protect confidential information, this presentation is not subject to your license agreement or any other service or subscription agreement with SAP. SAP has no obligation to pursue any course of business outlined in this presentation or any related document, or to develop or release any functionality mentioned therein.

This presentation, or any related document and SAP's strategy and possible future developments, products and or platforms directions and functionality are all subject to change and may be changed by SAP at any time for any reason without notice. The information in this presentation is not a commitment, promise or legal obligation to deliver any material, code or functionality. This presentation is provided without a warranty of any kind, either express or implied, including but not limited to, the implied warranties of merchantability, fitness for a particular purpose, or non-infringement. This presentation is for informational purposes and may not be incorporated into a contract. SAP assumes no responsibility for errors or omissions in this presentation, except if such damages were caused by SAP's intentional or gross negligence.

All forward-looking statements are subject to various risks and uncertainties that could cause actual results to differ materially from expectations. Readers are cautioned not to place undue reliance on these forward-looking statements, which speak only as of their dates, and they should not be relied upon in making purchasing decisions.



Agenda

1

WHY: Holistic Steering and Reporting

2

HOW: SAP approach to make sustainability measurable

3

WHAT: SAP Sustainability Control Tower

Sustainability is more relevant than ever

Companies need to act on sustainability now

Customers

79%

of buyers are changing preferences based on sustainability

Investors

50%

of all professionally managed assets will be ESG-mandated by 2025

Employees

90%

of employees implied that a company's ESG efforts enhances job satisfaction

Regulators

>600

voluntary & regulatory ESG standards / frameworks currently exist

Companies

70%

of EBITDA could be at stake from sustainability challenges

The ESG expectations are continually growing

RECORD

ESG transparency along the value chain

Data spanning multiple sources, formats and organizations without the granular level of details and precision

Public

REPORT

New and increasing ESG reporting requirements

Multiple frameworks and standards to report against and fulfilling the respective requirements

ACT

Sustainability touches all business processes

Sustainability strategy and initiatives disjoint from corporate strategy, business models and processes

ESG transparency is the first step in solving these challenges

SAP's unique position to be your partner

RECORD

Move from averages to actuals
with data across the value chain

88% of the World's Supply Chains
networked through SAP

Public

REPORT

Incorporate relevant frameworks
with built-in audit & assurance

>600 ESG frameworks & standards
simplified on extensible data foundation

ACT

Embed sustainability into your
business DNA

50 years of market leadership
in enterprise processes & applications



Agenda

1

WHY: Holistic Steering and Reporting

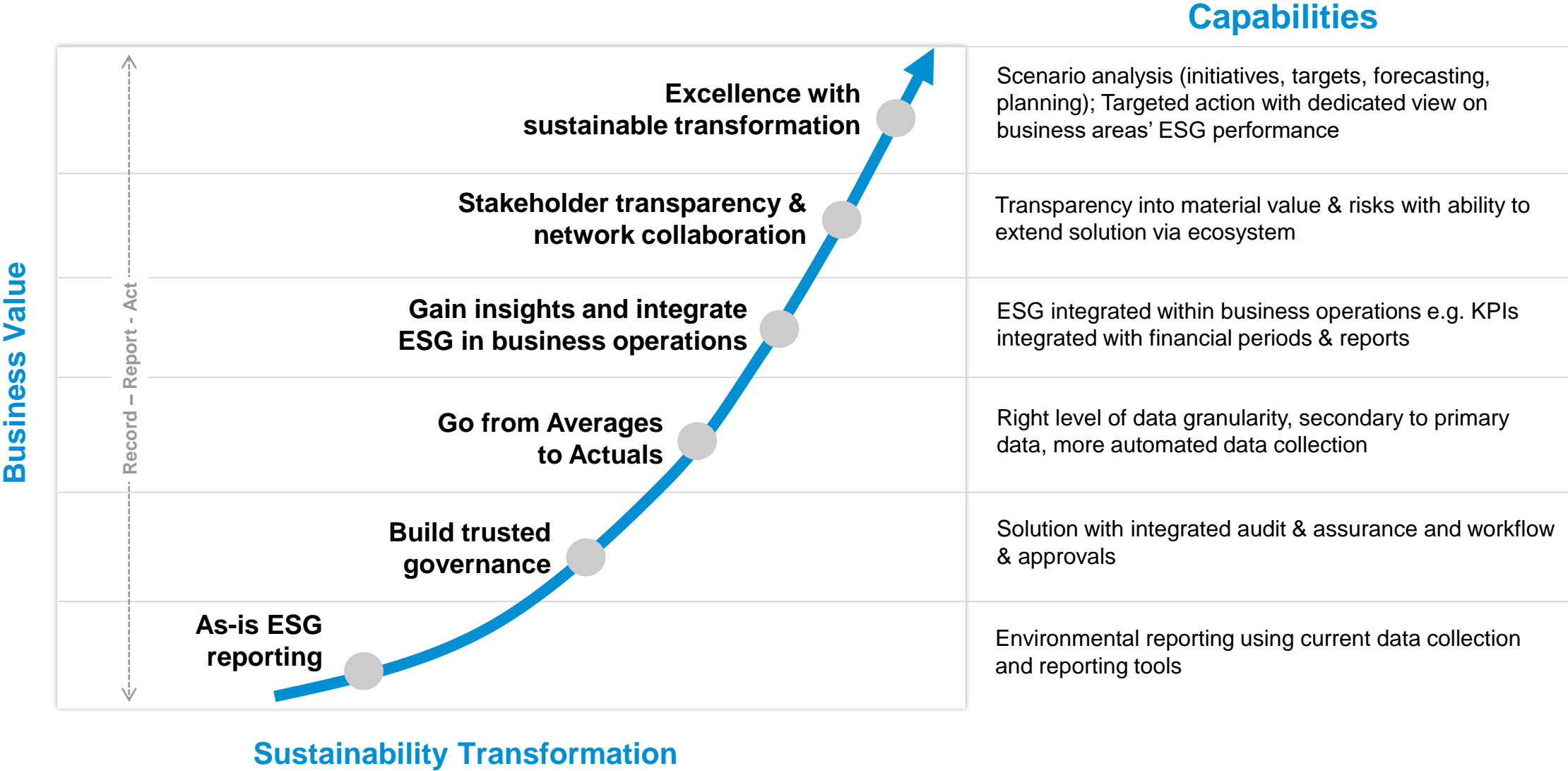
2

HOW: SAP approach to make sustainability measurable

3

WHAT: SAP Sustainability Control Tower

Unlock your journey to Holistic Steering & Reporting with SAP



The virtuous circle for holistic business transformation

1. Manage business processes

Run business processes at their best

2. Create transparency with data

Enable automated and timely extraction of auditable granular data from source systems

3. Planning & Target Setting & Forecasting

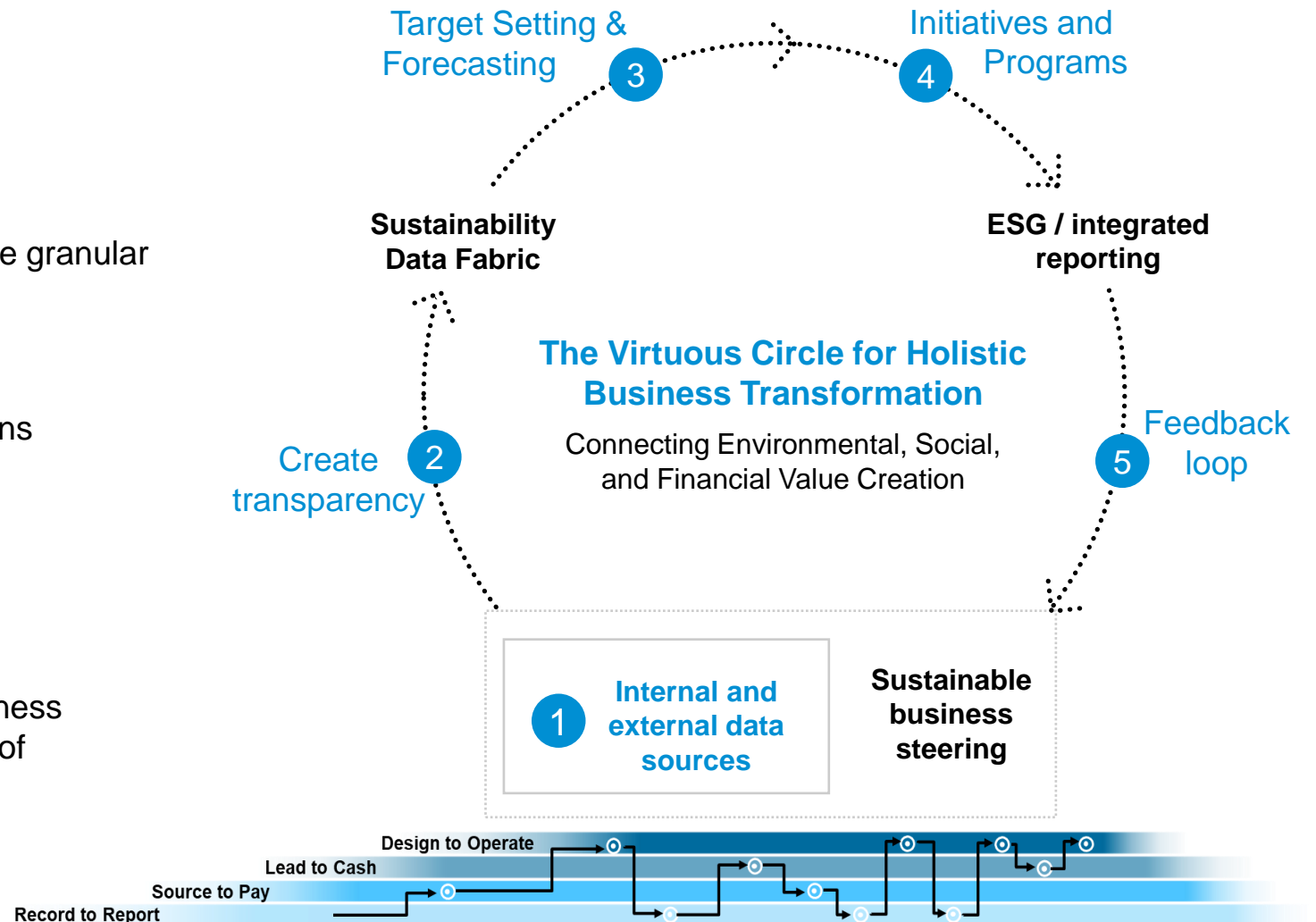
Define and plan against your Sustainability ambitions

4. Initiatives and Programs

Taking action and monitoring progress

5. Feedback loop and improvement

Embed relevant sustainability information into business processes to impact total performance at the point of decision-making



Integrate ESG performance directly with financial close



Chief Financial Officer

“I can now get our ESG house in order by leveraging our auditable standard reports in line with industry standards and prepare for additional upcoming mandatory standards.”

Prepare

Discovery & Advisory Services

- Determine your single materiality ESG KPI's
- Use SCT's TCFD framework to track KPI's and data

Record

Sustainability Control Tower

- Collect TCFD data with integration to SAP S/4HANA
- Track every step with audit and assurance

Report

Sustainability Control Tower

- Integrate SAP S/4HANA period close, org. data & financials
- Prepare a holistic and regulatory reporting
- Structure TCFD single materiality risks against your financials to mitigate financial risk

Act

Sustainability Control Tower

- Enable Controller to write-back TCFD impairments to SAP S/4HANA Finance Income Statement
- Manage Finance & ESG risks side by side in SAP S/4HANA
- Complement with **Treasury & Risk Management** to add TCFD ESG risks to Risk Mitigation Control

SAP S/4HANA

Holistic Steering & Reporting Use Cases (1/2)

Enable compliant reporting

- Comply with changing and growing number of standards and frameworks e.g. GRI, SASB, CSRD, EU Taxonomy, TCFD
- Provide automated, timely, audit-ready ESG KPIs to investors, customers & other stakeholders

Gain ESG transparency and insights

- Source accurate data by integrating with SAP and non-SAP applications
- Gain powerful insights to quantify the impact of your business and make informed decisions to achieve your goals

Ensure assurance and auditability to reduce risk

- Mitigate financial risk by ensuring assurance
- Gain trust by establishing a robust and auditable ESG reporting

Holistic Steering & Reporting Use Cases (2/2)

Set and achieve ESG targets

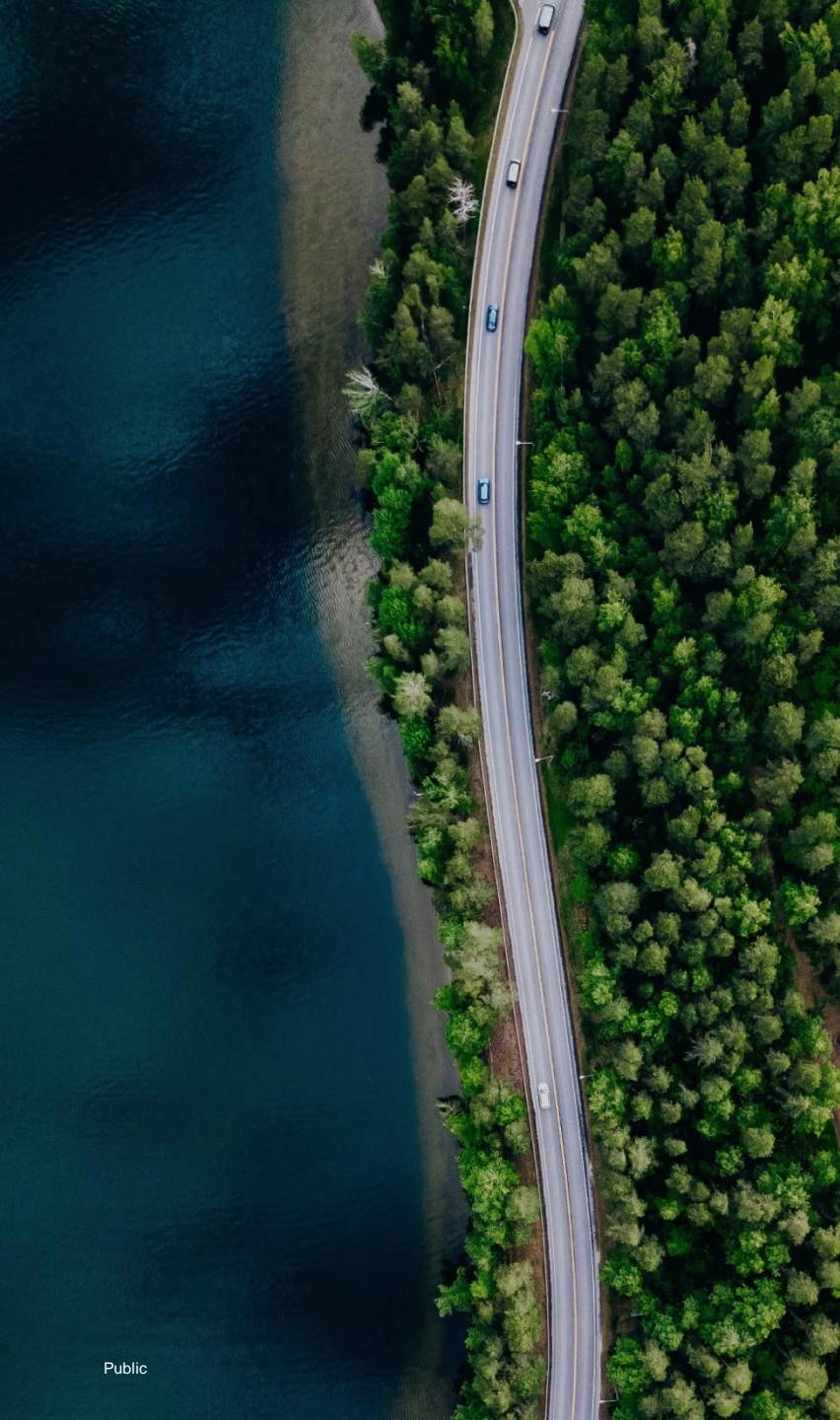
- With the help of ESG transparency and insights, set definite targets, create initiatives and track progress continuously
- Use intelligent forecasts and planning tools to future-proof your business and achieve your ESG goals

Improve ESG performance

- Embed relevant sustainability information into financial and operational processes to drive targeted action
- Give business units a dedicated view on their sustainability performance and indication of improvement areas

Engage with the ESG ecosystem

- Utilize API's that enable solution extensibility to bring in your own content, KPIs, data sets or applications
- This allows you to cater to your individual requirements and gain access to the largest ESG ecosystem



Sustainability is a team sport

Global Strategic Service Partners & Alliances



The SAP® PartnerEdge® Ecosystem

Thought leadership partners & impact networks





Agenda

1

WHY: Holistic Steering and Reporting

2

HOW: SAP approach to make sustainability measurable

3

WHAT: SAP Sustainability Control Tower

SAP Holistic Steering & Reporting

A part of the SAP Cloud for Sustainable Enterprises

Business Network

for carbon data sharing

Industry Capabilities

to solve your specific challenges

Partner Ecosystem

geared towards sustainability

Focus today

Holistic Steering and Reporting – SAP Sustainability Control Tower

Record – Report – Act

Zero Emissions

with Climate Action

Decarbonize your entire value chain (scope1-3)
based on actual business transactions

Zero Waste

with Circular Economy

Incorporate **circularity** into your supply chain
& create sustainable business models

Zero Inequality

with Social Responsibility

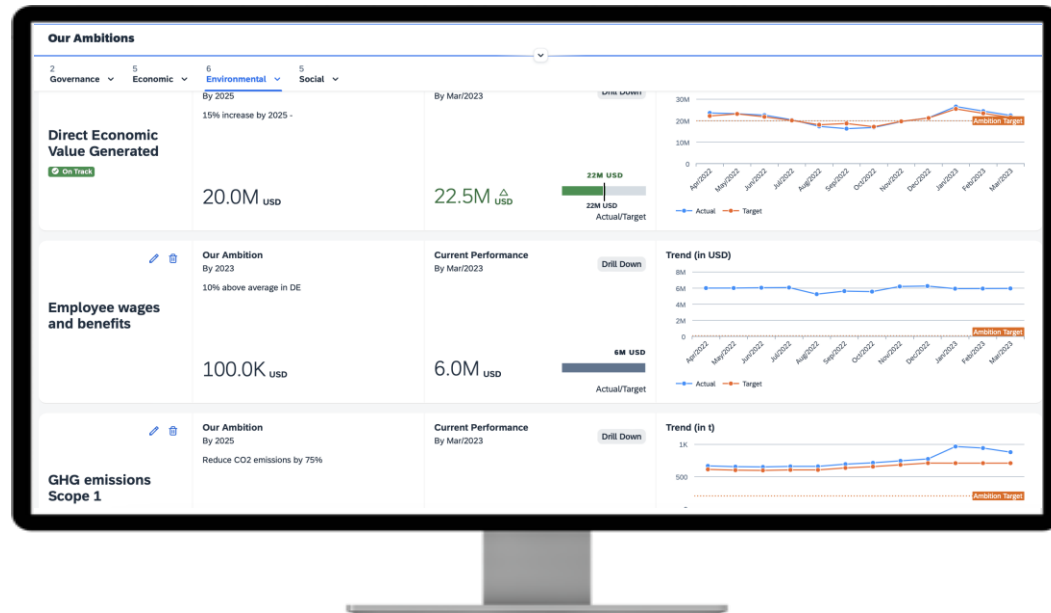
Understand the **impact of your business**
on **people and the society**

SAP S/4HANA, Customer relationship management, Human capital management, Spend Management and Business Network

SAP Business Technology Platform

SAP Sustainability Control Tower

Automated, auditable, compliant reporting with actual data & insights to embed sustainability into business processes



Standard semantic frameworks supported



Record: Actuals instead of averages

Record ESG factors with out-of-the-box integration with SAP systems for faster time to value & granular data visibility based on actual data, not averages

Report: Audit-ready ESG metrics

Report regulatory compliant ESG metrics covering common frameworks based on an open & extensible solution with the largest ESG ecosystem

Act: ESG embedded in business processes

Act by planning your future with actionable insights, forecasts and setting targets; track initiatives & optimize business processes to make an impact

SAP Sustainability Control Tower | Record

Record ESG factors with integration into SAP systems for faster time to value & granular data visibility based on actual data

RECORD

REPORT

ACT

Streamline data integration process

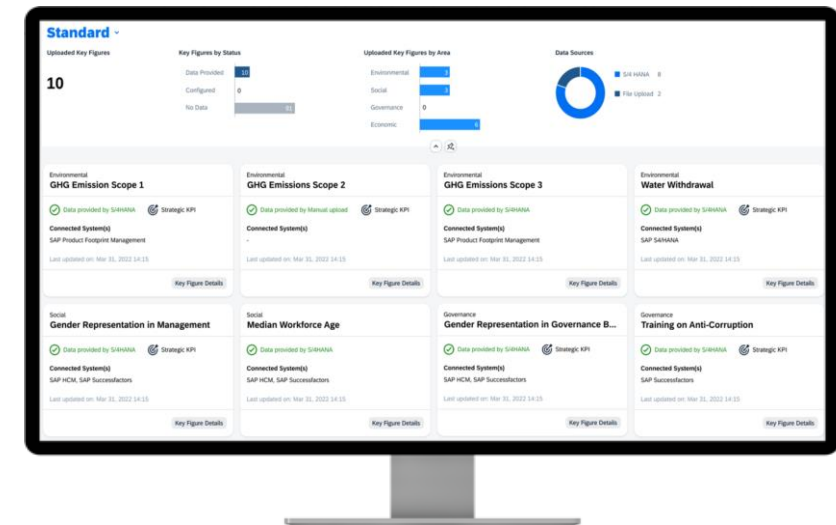
Automate the data collection and harmonization with pre-built data integration, APIs, file import and manual entry

Instantly create audit-ready data

Improve data integrity and quality with data validation and approval workflows to ensure audit-ready data

Use predefined data models & calculations

Harmonize, allocate and calculate granular sustainability KPIs according to established structures from Finance, HR and Operations



SAP Sustainability Control Tower | Report

Report regulatory compliant ESG metrics based on an open & extensible solution with the largest ecosystem

RECORD

REPORT

ACT

Map seamlessly to multiple ESG standards

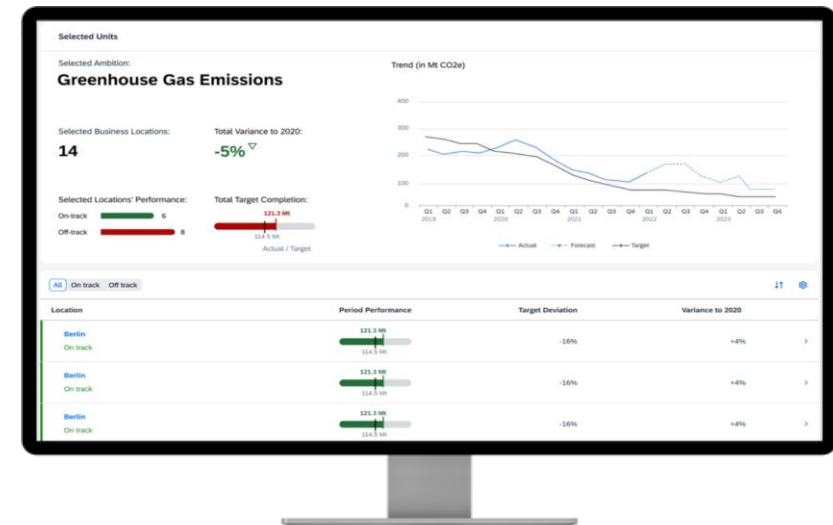
Report the metrics for the most common standards, such as GRI, TCFD, EU Taxonomy and more with pre-defined ESG metrics

Extend standard functionality via APIs

Create your own metrics and bring partner metrics, business and regulatory content and apps to drive impact

Create management dashboards

Provide your management transparency on core ESG metrics with one easy-to-use dashboard



SAP Sustainability Control Tower | Act

Act by planning your future with actionable insights, forecasts & concrete targets to achieve a measurable impact

RECORD

REPORT

ACT

Set actionable, realistic targets

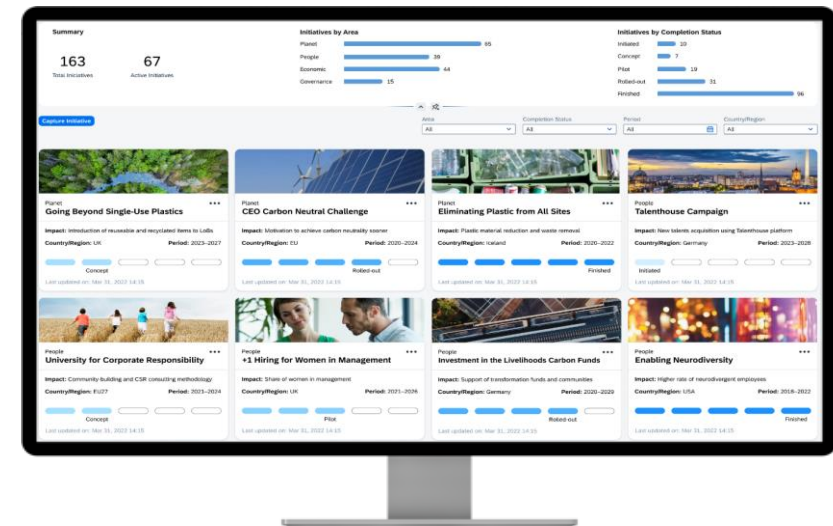
Set targets, gain actionable insights into your core processes, forecast outcomes and analyze scenarios

Monitor and improve your progress

Link your initiatives to your sustainability targets and track progress

Embed sustainability into core processes

Create role-based sustainability actions (e.g., CFO, CPO etc.) to improve business unit performance and mitigate risks



Transform into a sustainable future with SAP

Enable Holistic Sustainability Steering & Reporting with SAP Sustainability Control Tower

Record

Move from averages to actuals with data across the entire value chain

Report

ESG KPIs for most relevant frameworks with built-in audit & assurance

Act

Embed sustainability into your business DNA & drive transformation

Adopt SAP Sustainability Control Tower to..

Enable compliant ESG reporting

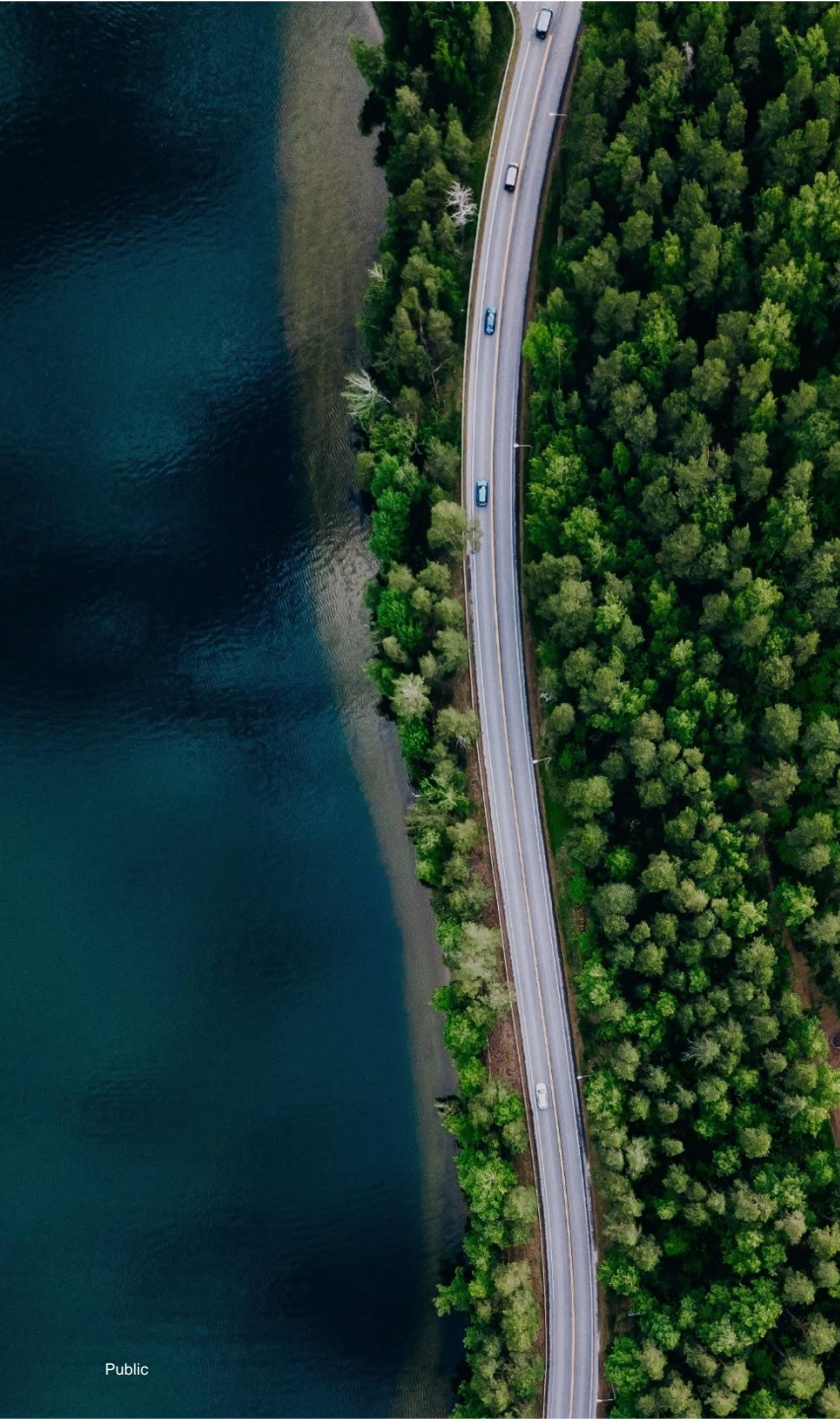
Gain transparency & insights on ESG

Improve ESG performance

Set and achieve ESG targets

Ensure assurance & auditability of ESG

Engage with the ESG ecosystem

An aerial photograph showing a two-lane asphalt road that curves through a dense green forest. To the left of the road is a calm, dark blue lake. Several cars are visible on the road, traveling in both directions. The overall scene is peaceful and natural.

Next step: Join us in an SAP ESG Impact Lab session

- Discuss your **ESG requirements**, from regulatory reporting to business unit integration to sustainable transformation
- Deep dive into **your specific needs for ESG reporting and associated GHG-Protocol** & other sustainability requirements
- Validate the **way forward** for a quick win first phase and longer term implementation roadmap leveraging our services offering



Thank you.

Contact information:

Name
name@sap.com

SAP Sustainability Control Tower

Fit for purpose SaaS application

Detailed architecture

SCT – Frontend

Fiori applications

Landing page, configuration, administration audit, design time

SCT – Data integration & management

Services on BTP

Calculation & process engine¹, metric catalogue, BTP integration agents, public API

SCT – Data foundation

Primary Persistency

HANA cloud DB server²

SCT DB schema, Customer data

Data model

Resides in HANA Cloud, decoupled from SAP Data Warehouse Cloud – (DWC & SAC as extensions available¹)

Integration

Turnkey integration with S/4HANA (based on Cloud Data Integration interfaces)

Extensibility

Offered via (generic) data model and calculation engine

Target picture

Significantly reduced TCO via high tenant density (multiple tenants on same HANA instance)

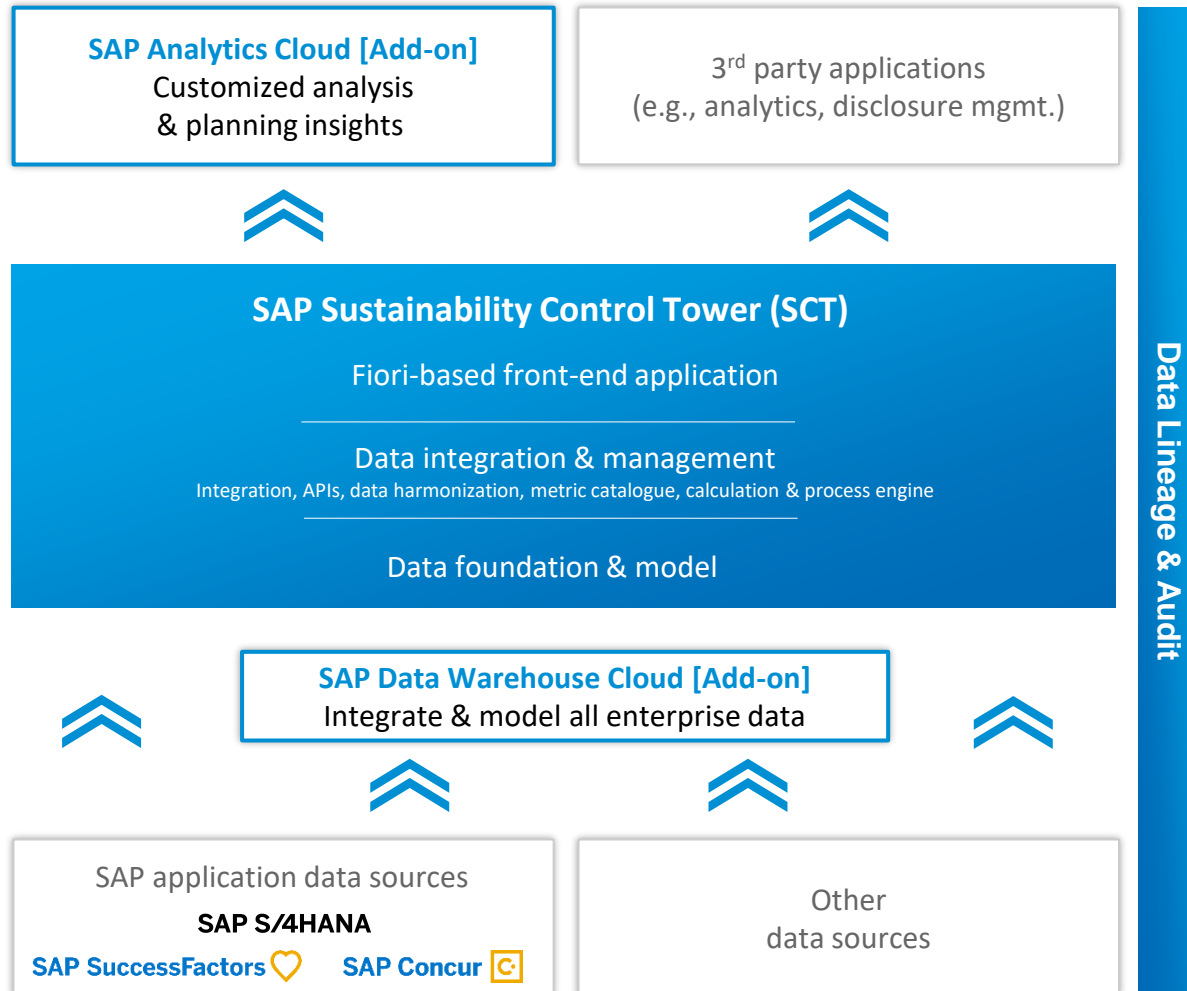
Application Lifecycle management

Streamlined deployment & updates via Deploy with Confidence

¹ Includes key functionalities of PaPM ². Multi tenant

Achieving Holistic Steering and Reporting

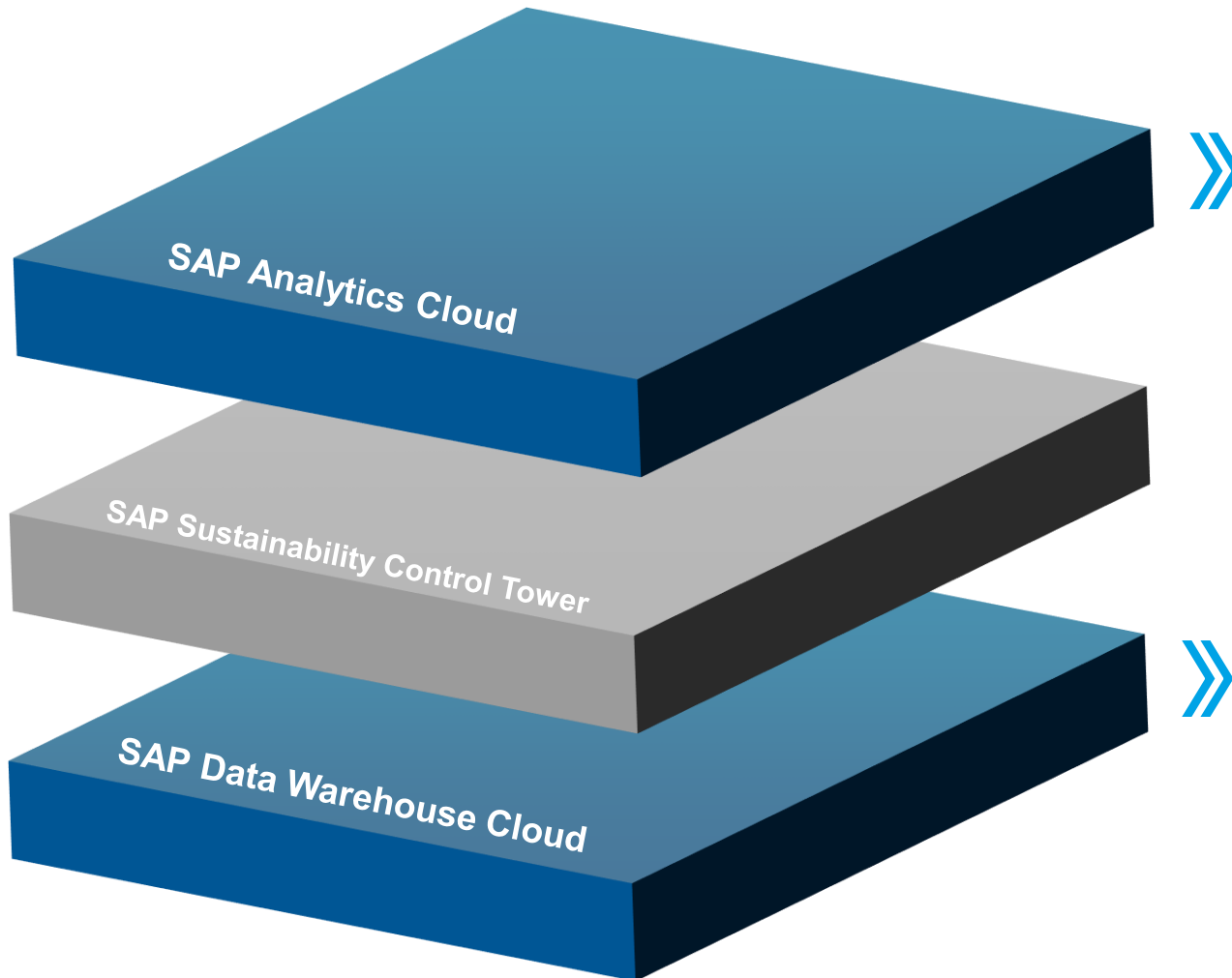
Empower your business to act with ESG transparency along the value chain



- **Harmonized insights** by consolidating, modelling and enriching ESG, financial and operational data enabling boardroom and business-level decisions
- **ESG performance management** with enterprise planning, predictive forecasting, what-if simulations and impact analysis across the value chain
- **Pre-built data models** to support established reporting frameworks and customer-specific adaptations based on SAP, non-SAP, structured and unstructured data
- **Embed sustainability dimension** into business applications and processes through enterprise data integration and modelling and enriched partner content

Broaden the impact of your ESG projects

Extend the SAP Sustainability Control Tower and transform your data strategy



Extend analytics to reduce environmental footprint at the source, optimize supplier decisions and foster inclusive culture across the organization

Gain deeper insights into your ESG scores to make smart investment decisions for your sustainability programs and diversity spend

Simulate outcomes and evaluate sustainability initiatives with what-if analysis and scenario planning

Integrate sustainability, financial, and operational planning on one enterprise planning foundation

Unify all data with a single business semantic service to **make the most impactful decisions**

Simplify the integration of 3rd party data to **understand the influence of external forces** on your operations

Incorporate your existing data in SAP Business Warehouse (BW) in the cloud to **enrich analysis and accelerate innovation**

Sustainability metrics overview – Q4 update

SCT delivers a set of mostly commonly used sustainability metrics¹ out-of-the-box

Environmental

Metric	Reference
GHG Emission Scope 1	GRI 305 1-3
GHG Emissions Scope 2	GRI 305 1-3
GHG Emissions Scope 3	GRI 305 1-3
Water Withdrawal	GRI 303-3
Water Consumption	GRI 303-5
Land Use – Area	GRI 304-1
Land Use – Sites	GRI 304-1

Social

Metric	Reference
Gender representation in Management	GRI 405-1b
Median Workforce Age	GRI 405-1b
Pay equality by Gender (Remuneration)	GRI 405-2
Pay equality by Gender (Base salary)	GRI 405-2
Pay equality by Ethnicity(Remuneration)	GRI 405-2
Pay equality by Ethnicity (Base salary)	GRI 405-2
Wage Level	GRI 202-1
Level of CEO Compensation	GRI 202-1
Work-related incidents	GRI 403
Work-related fatalities	GRI 403
Incidents per million hours worked	GRI 403
Training duration per employee	GRI 404-1
Training expenditure	GRI 404-1
Rate of new hires	GRI 401-1
Total number of new hires	GRI 401-1
Rate of turnover	GRI 401-1
Total number of turnover	GRI 401-1

Governance

Metric	Reference
Gender representation in Governance Body	GRI 2
Training on Anti-Corruption	GRI 205-2
Number of Corruption Incidents	GRI 205-3

Economic

Metric	Reference
Revenue	GRI 201-1
Operating costs	GRI 201-1
Employee wages and benefits	GRI 201-1
Payments to providers of capital	GRI 201-1
Payment to government	GRI 201-1
Community investments	GRI 201-1
Financial assistance received from the government	GRI 201-4
Capital expenditures	IAS 7, US GAAP ASC 230
Depreciation	IAS 7, US GAAP ASC 230
Share buybacks	IAS 7, US GAAP ASC 230
Dividend payments	IAS 7, US GAAP ASC 230
Total global tax	GRI 201-1
Corporate income taxes	GRI 201-1
Property taxes	GRI 201-1
Non-creditable VAT	GRI 201-1
Other sales taxes	GRI 201-1
Employer-paid payroll taxes	GRI 201-1
Other taxes	GRI 201-1
Total R&D expenses	US GAAP ASC 730

1. Selection based on World Economic Forum - Stakeholder Capitalism Core Metrics - representing metrics from GRI and US GAAP